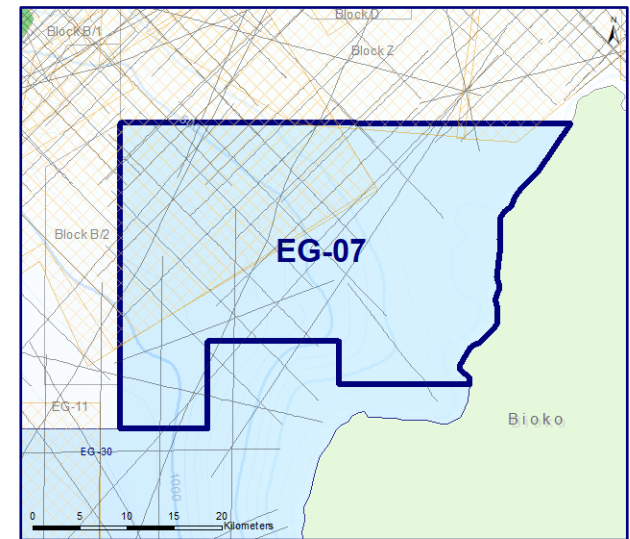
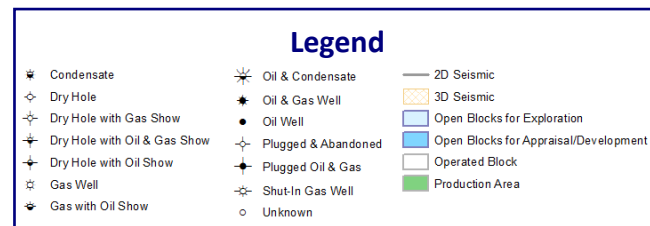
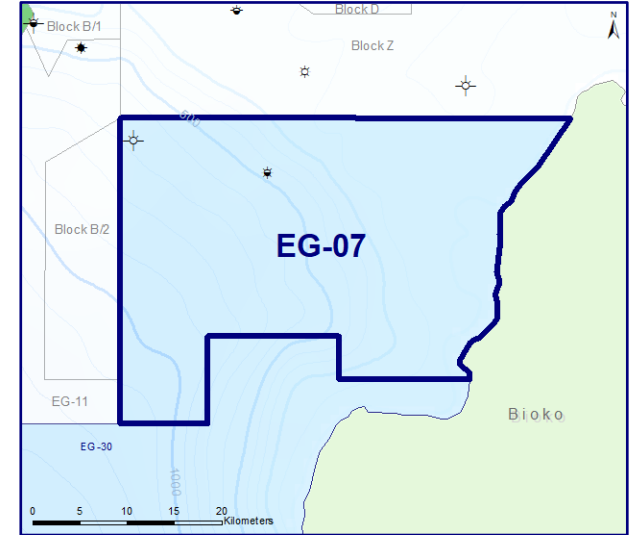
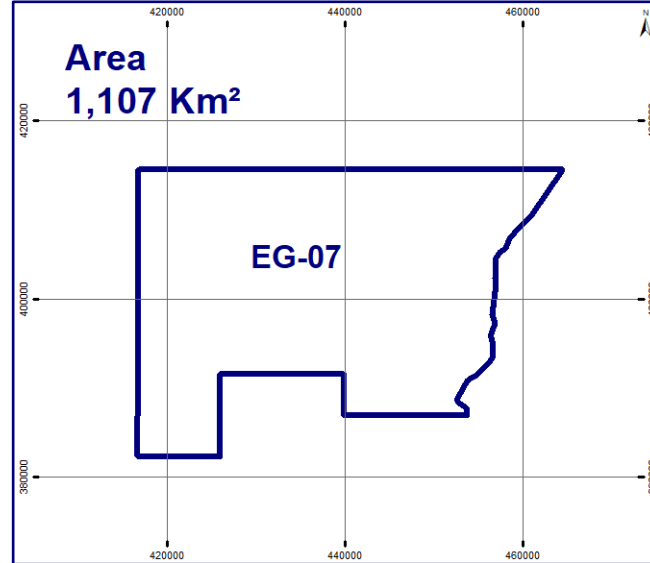
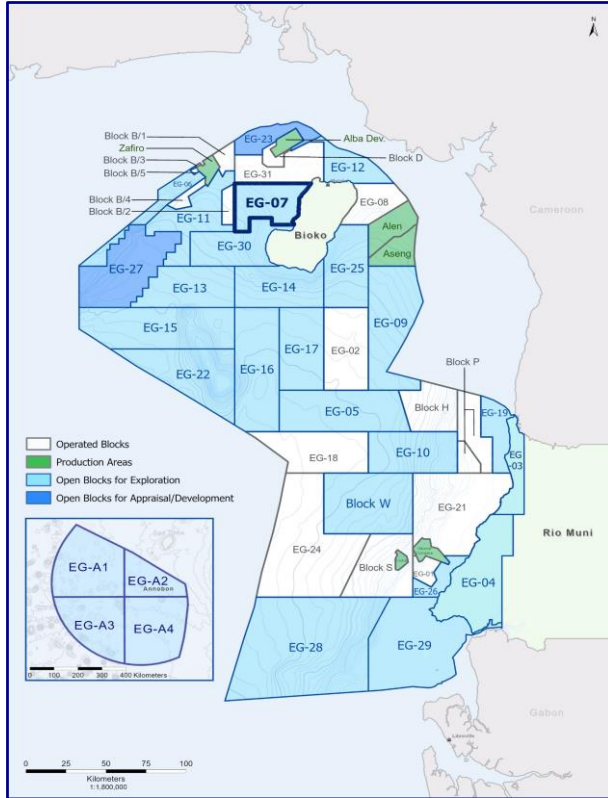




EG Ronda

# EG-07

## Open Block for Exploration



**3D Seismic**

3 Available Areas

- Repsol Block C = 714 km<sup>2</sup>
- EG07 from B+C = 652 km<sup>2</sup>
- EG07 Ex Alba = 55 km<sup>2</sup>

Total Area = 1,420 km<sup>2</sup>

**2D Seismic**

30 Available Lines

Total Length = 633 Km

**Wells**

2 Wells Drilled

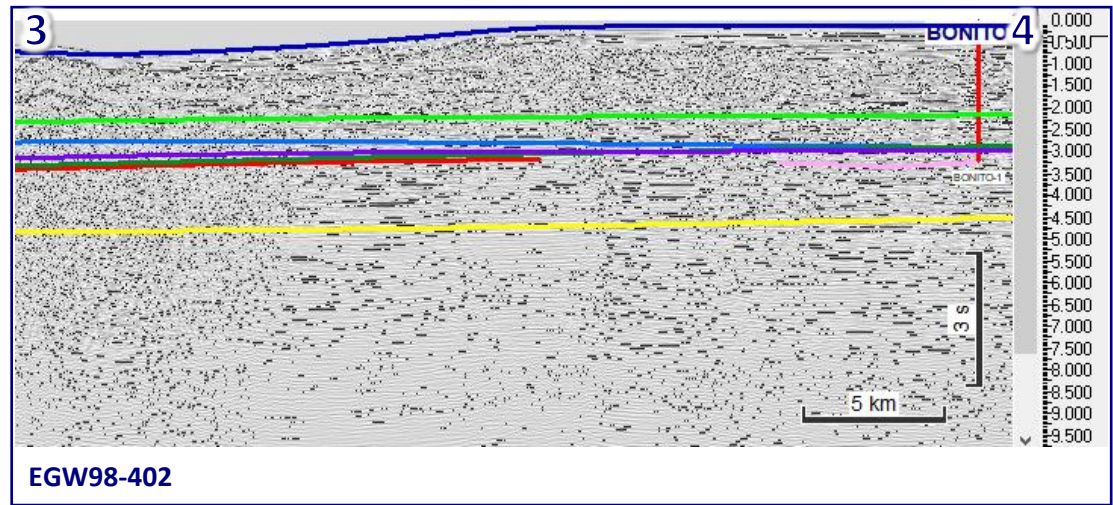
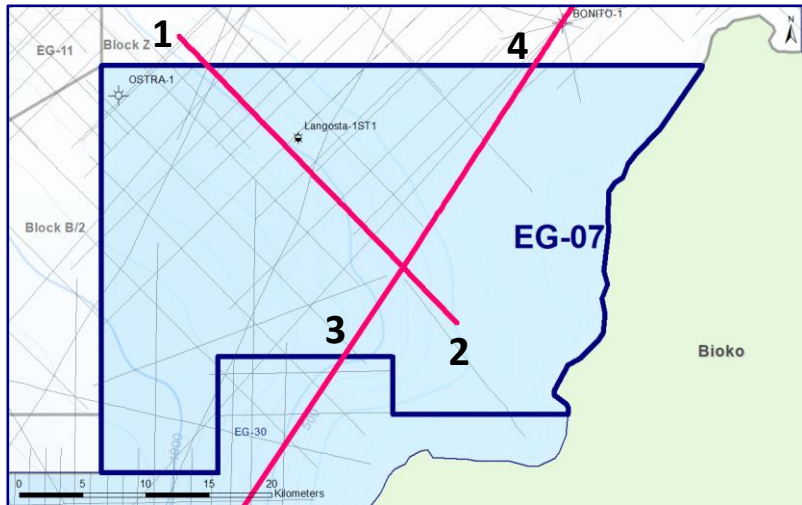
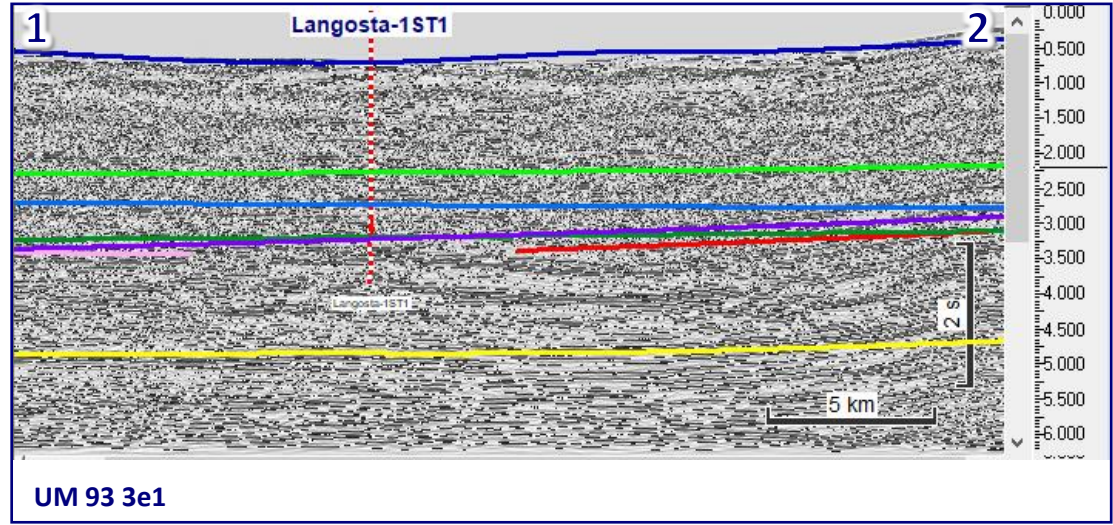
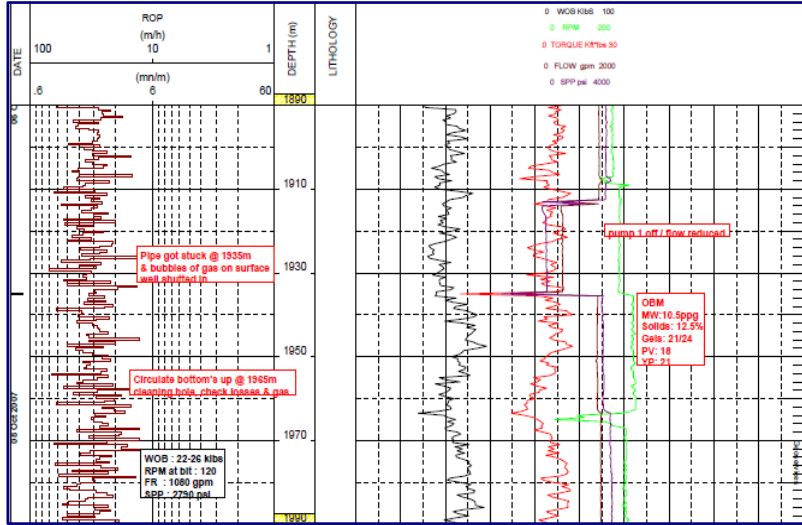
- OSTRA-1
- LANGOSTA-1



EG Ronda

# EG-07

## 2D Seismic & Well Log





EG Ronda

# EG-07

## 3D Seismic



### 3D Survey Info

Survey Name: Block B\_C Merge

Year: 2007

Area : 2,658.8 Km<sup>2</sup>

Recorded Date: 2007

