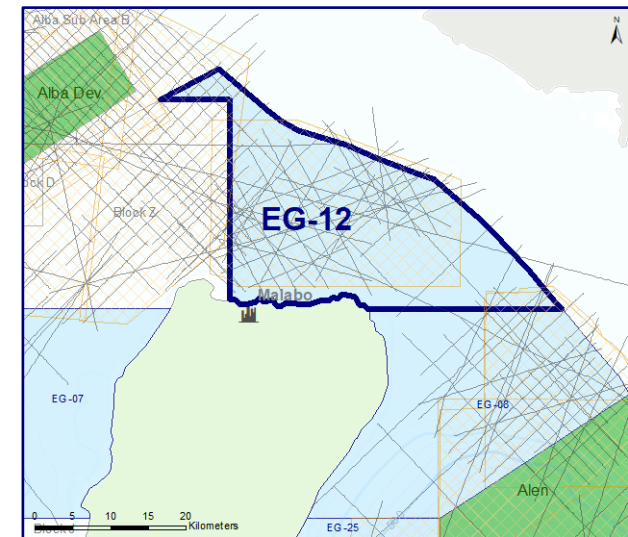
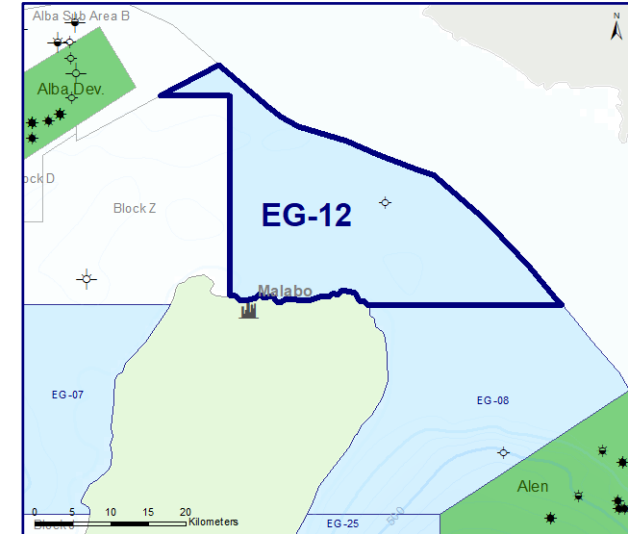
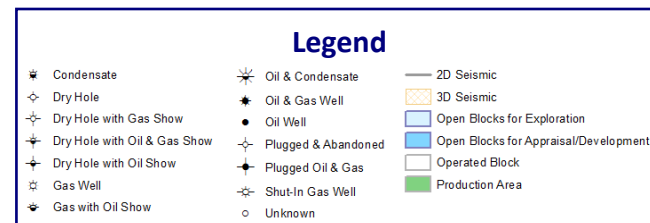
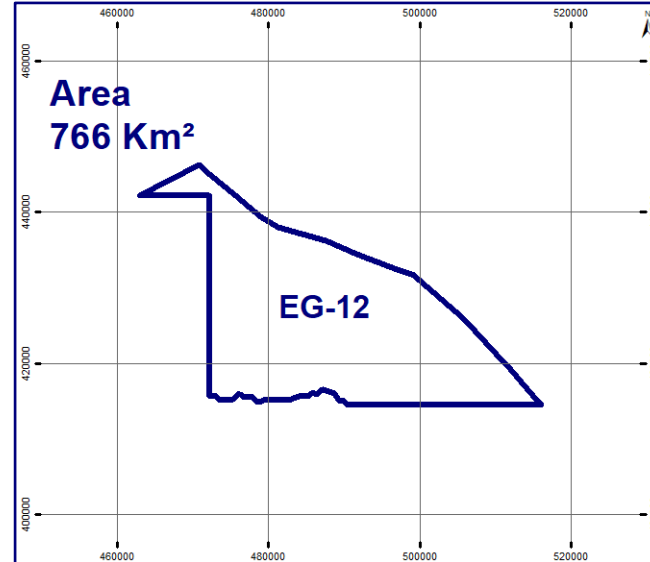
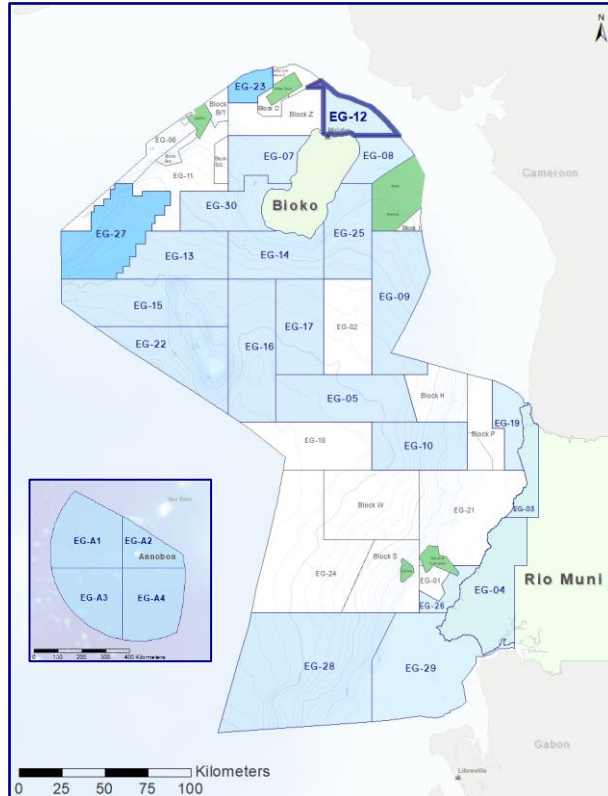




EG Ronda

EG-12

Open Block for Exploration



3D Seismic

2 Available Areas

- 3D-1 = 774 Km²
- 3D-2 = 77 Km²

Total Area = 851 Km²

2D Seismic

41 Available Lines

Total Length = 785 Km

Wells

- 1 Wells Drilled
- Dorado-1



EG Ronda

EG-12



2D Seismic & Well Log

2D Survey Info

Survey Name: EG-A

Company: UMIC

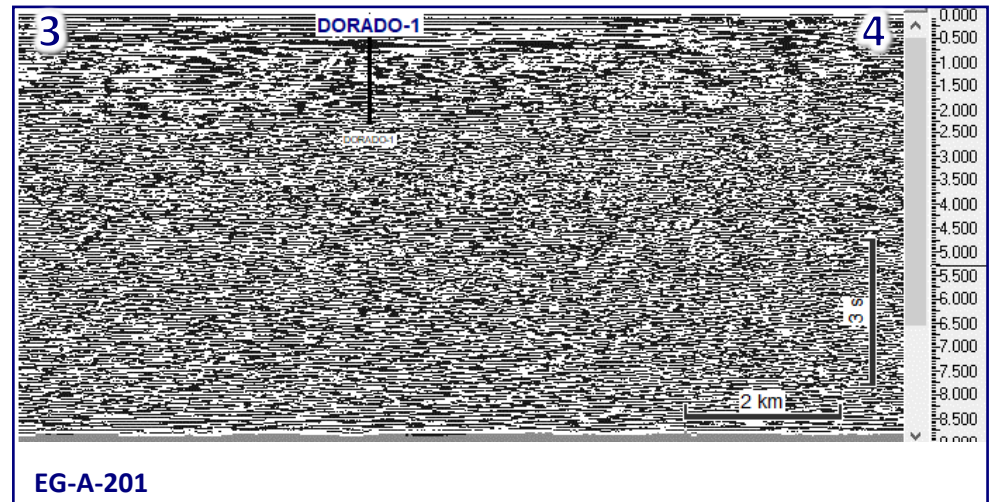
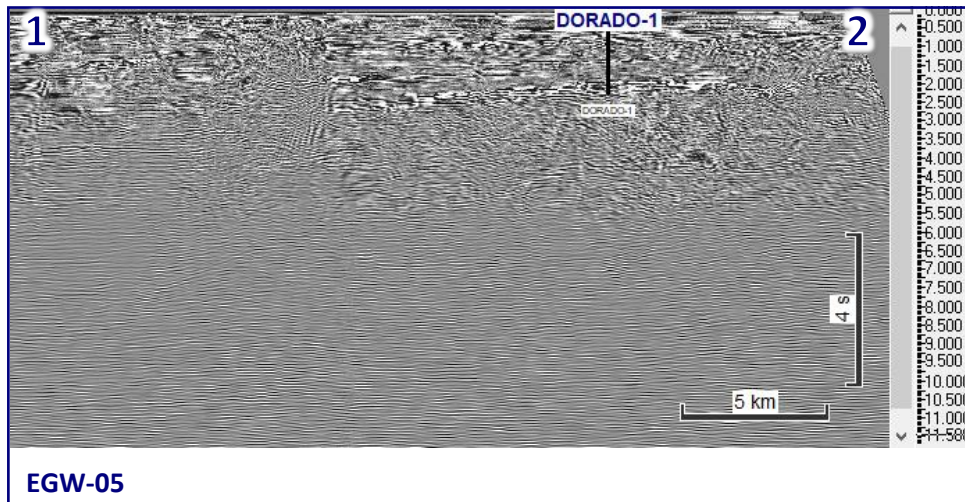
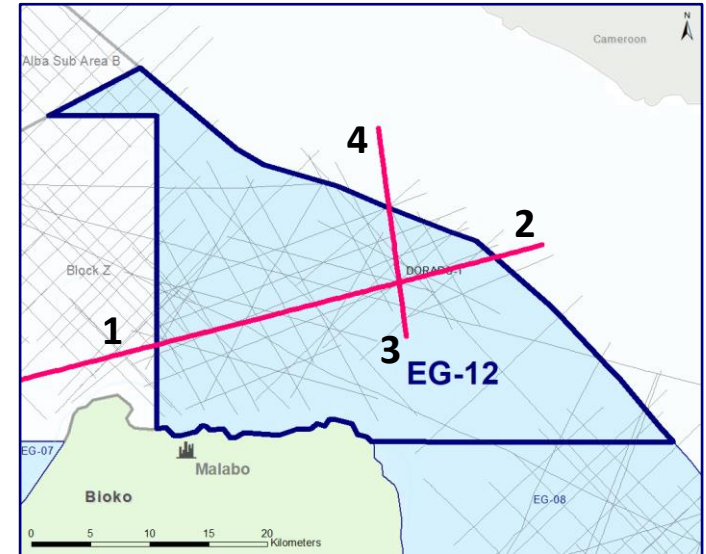
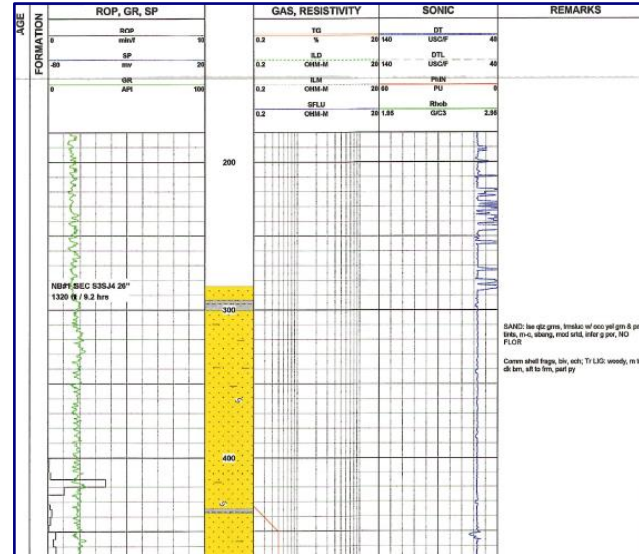
Year: 1992

Data Type: Scanned Migration

Processing by: Houston Geoscan

Processing: Migration

Processing Year: 1993





EG Ronda

EG-12

3D Seismic



3D Survey Info

Survey Name: Block B14 Data Area

Year: 2003

Area: 774 Km²

Operator: Noble

Data Type: Full Stack Migration

Recorded by: PGS GEOPHYSICAL

Recorded Date: 2002

Processed: GEOTRACE ENSIGN GEOPHYSICS

Processed Date: 2005

Processing: Migration/Angle Stacks

