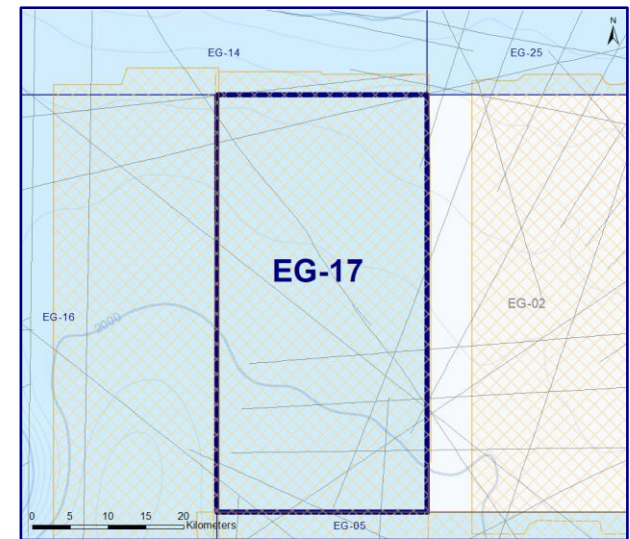
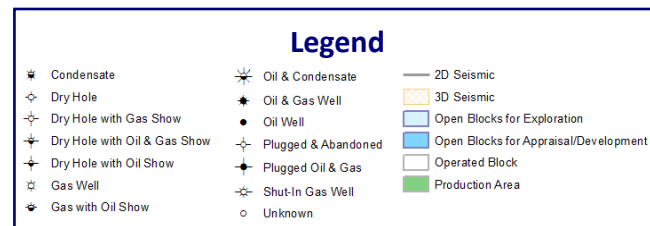
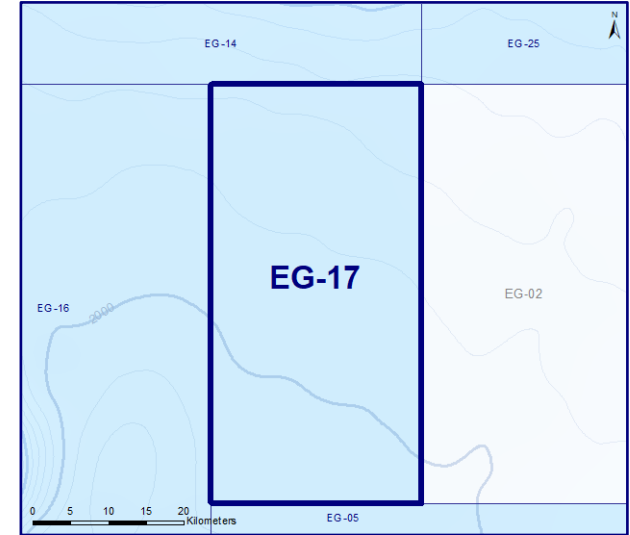
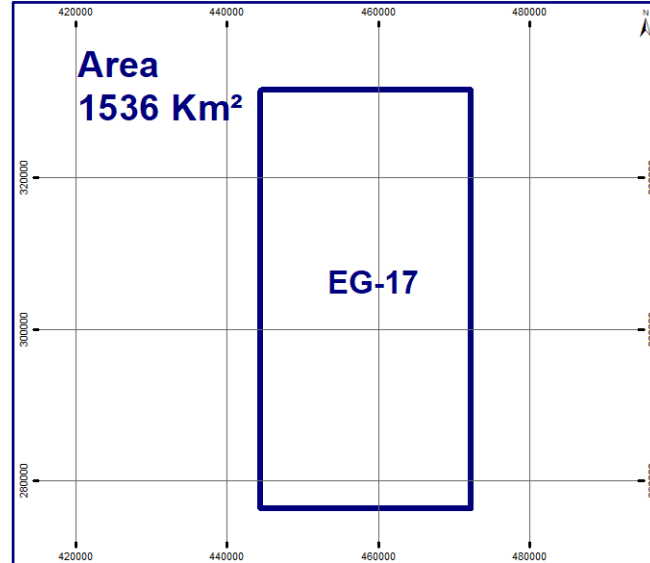
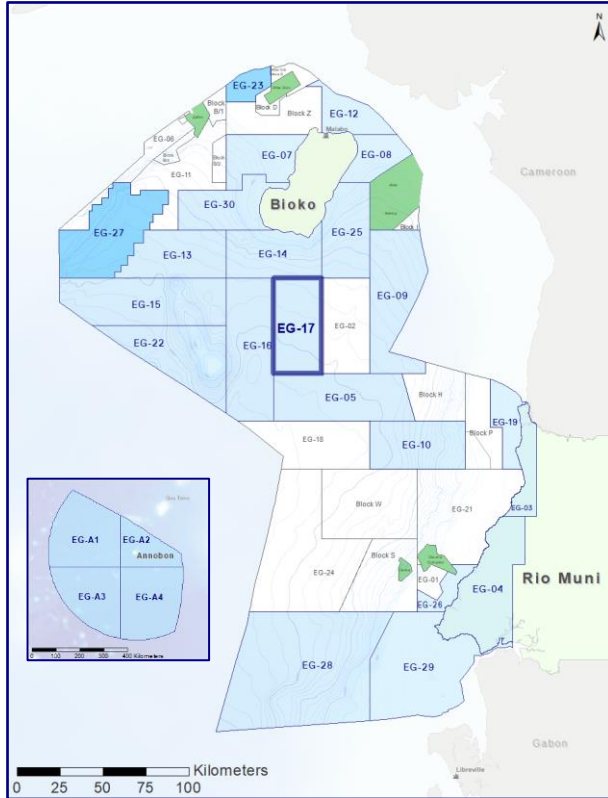




EG Ronda

EG-17

Open Block for Exploration



3D Seismic

1 Available Area

- 3D-1

Total Area = 1,792 Km²

2D Seismic

11 Available Lines

Total Length = 287 Km

Wells

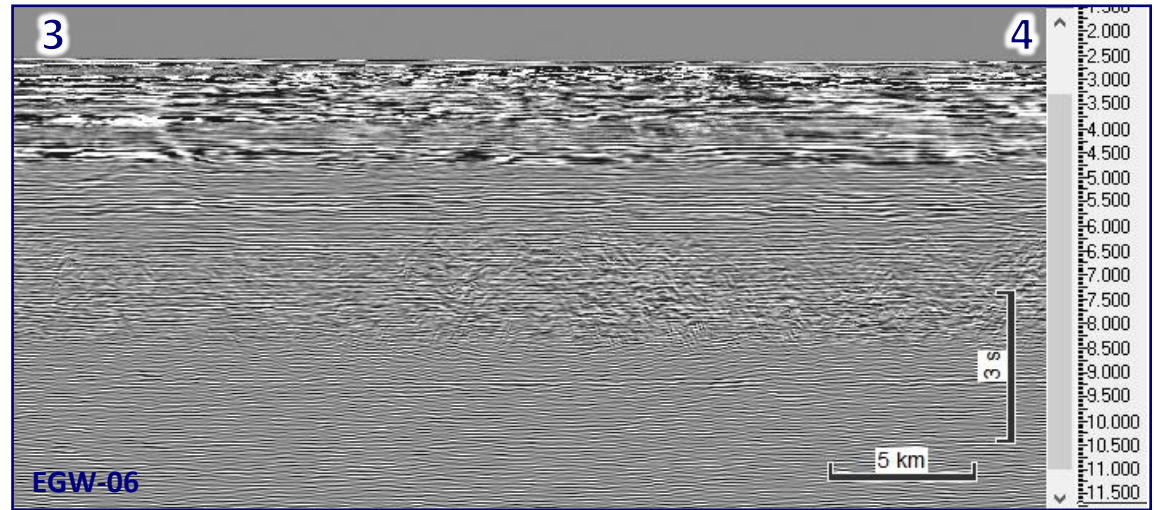
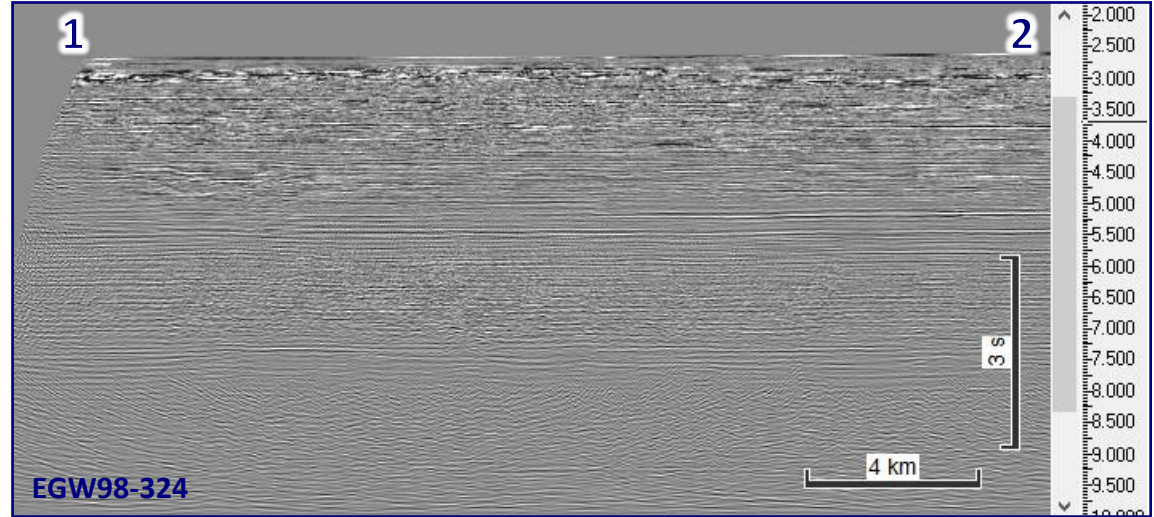
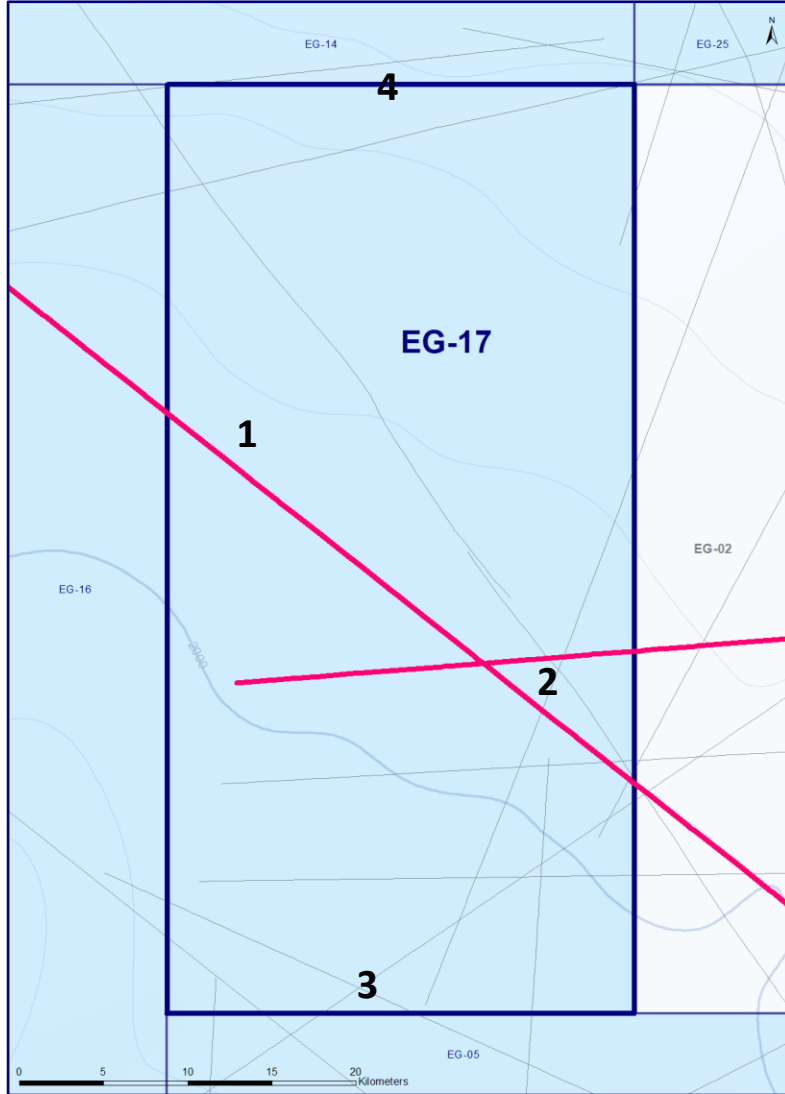
None Available



EG Ronda

EG-17

2D Seismic

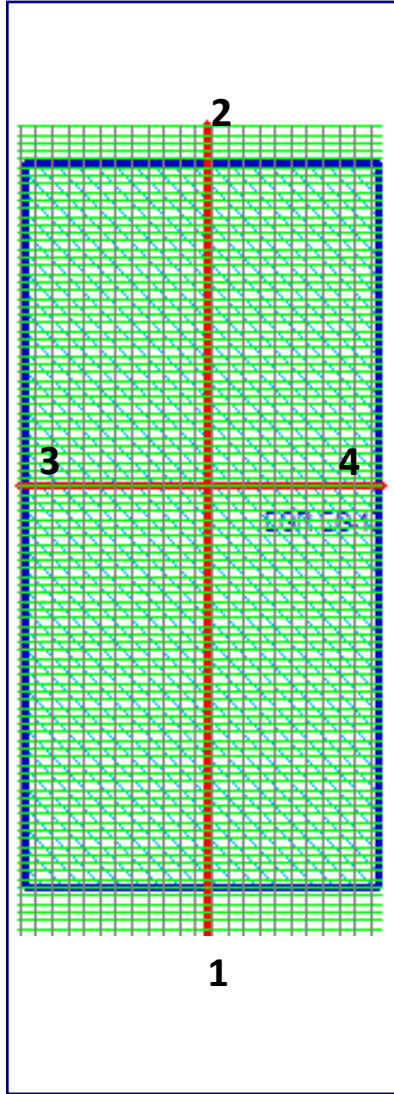




EG Ronda

EG-17

3D Seismic



3D Survey Info

Survey Name:

Block F-13_G-13

Year:

2013

Area:

1,792 Km²

Data Type:

Full Stack Migration

Recorded by:

BGP Marine

Recorded Date:

2013

Processed:

ION GXT

Processed Date:

2014

Processing:

Migration/Angle Stacks

