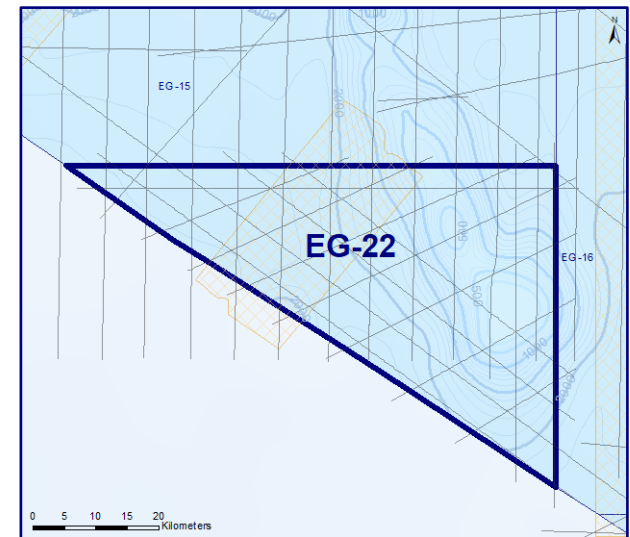
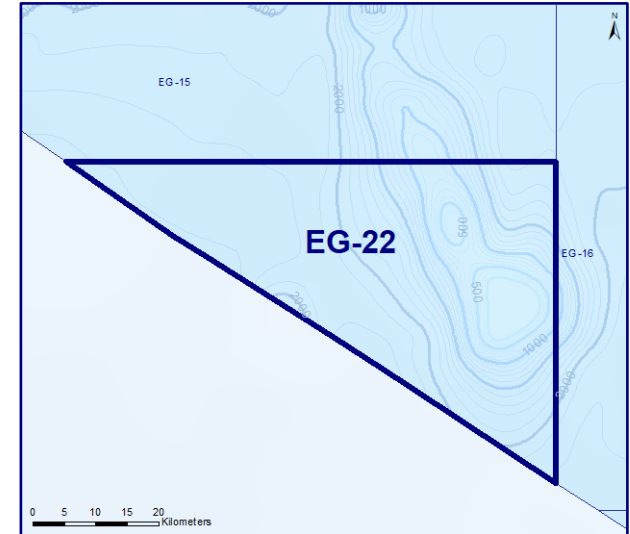
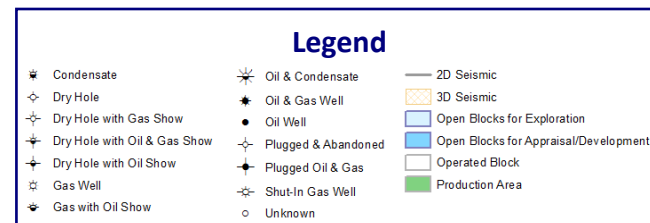
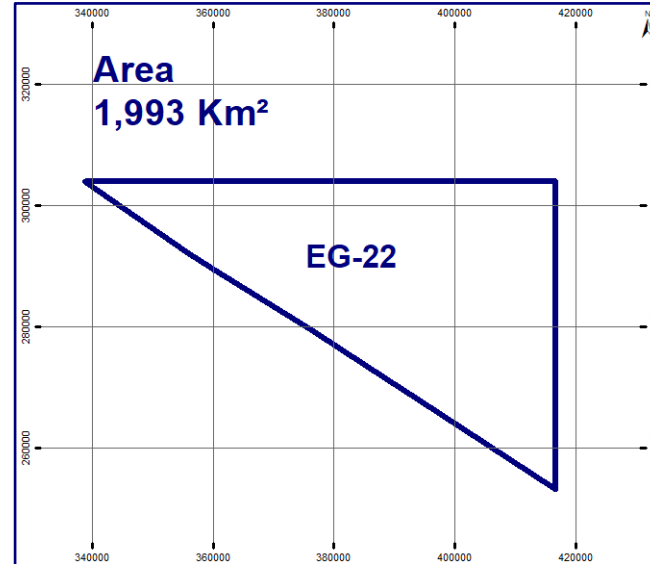
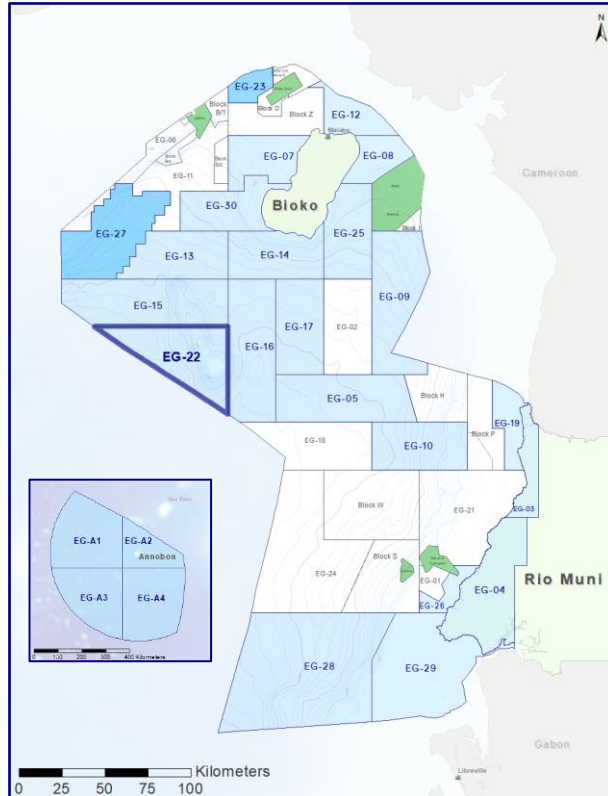




EG Ronda

EG-22

Open Block for Exploration



3D Seismic

1 Available Area

- 3D-1

Total Area = 654 Km²

2D Seismic

25 Available Lines

Total Length = 1,153 Km

Wells

None Available

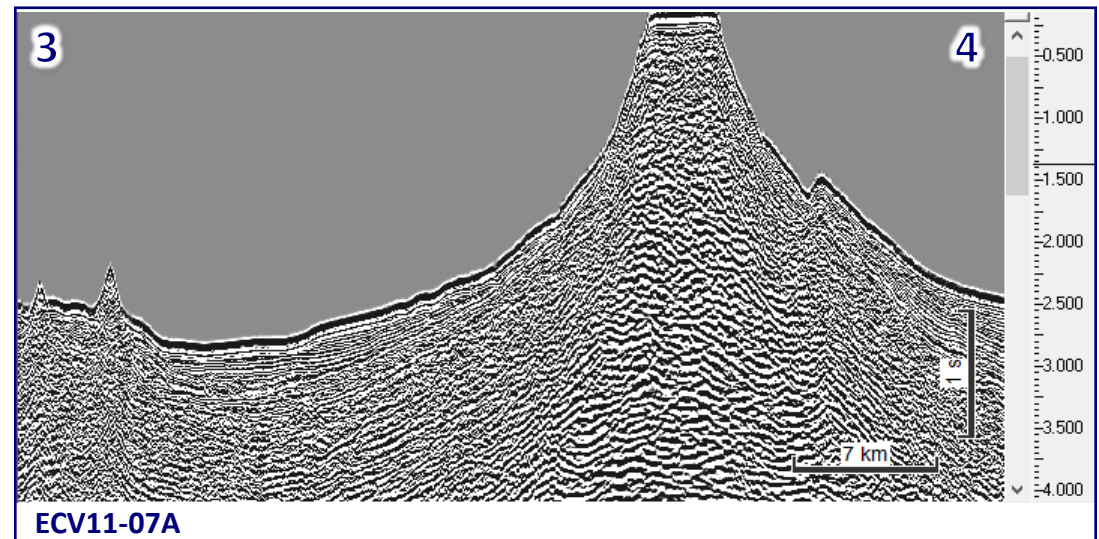
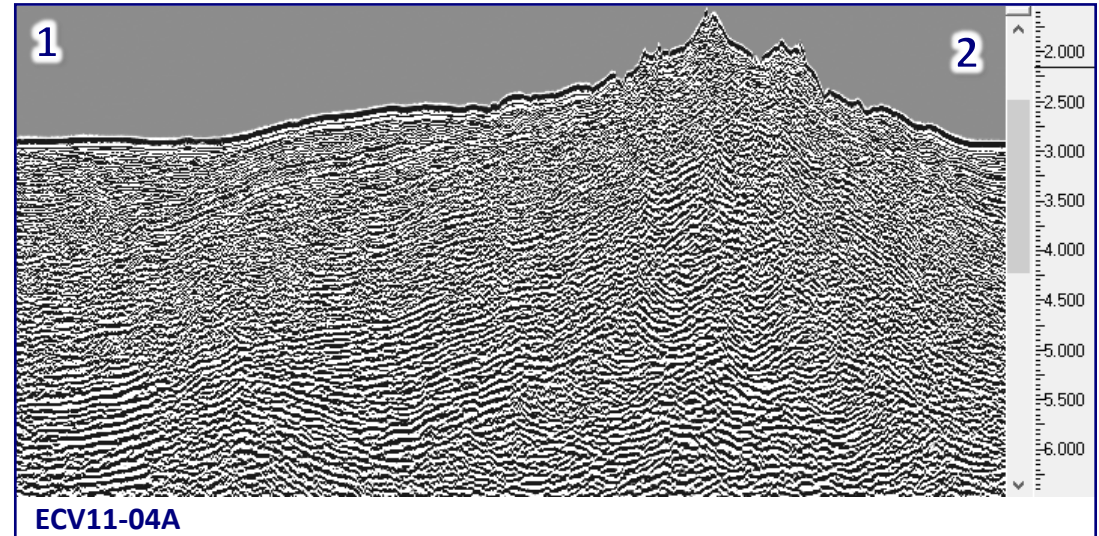
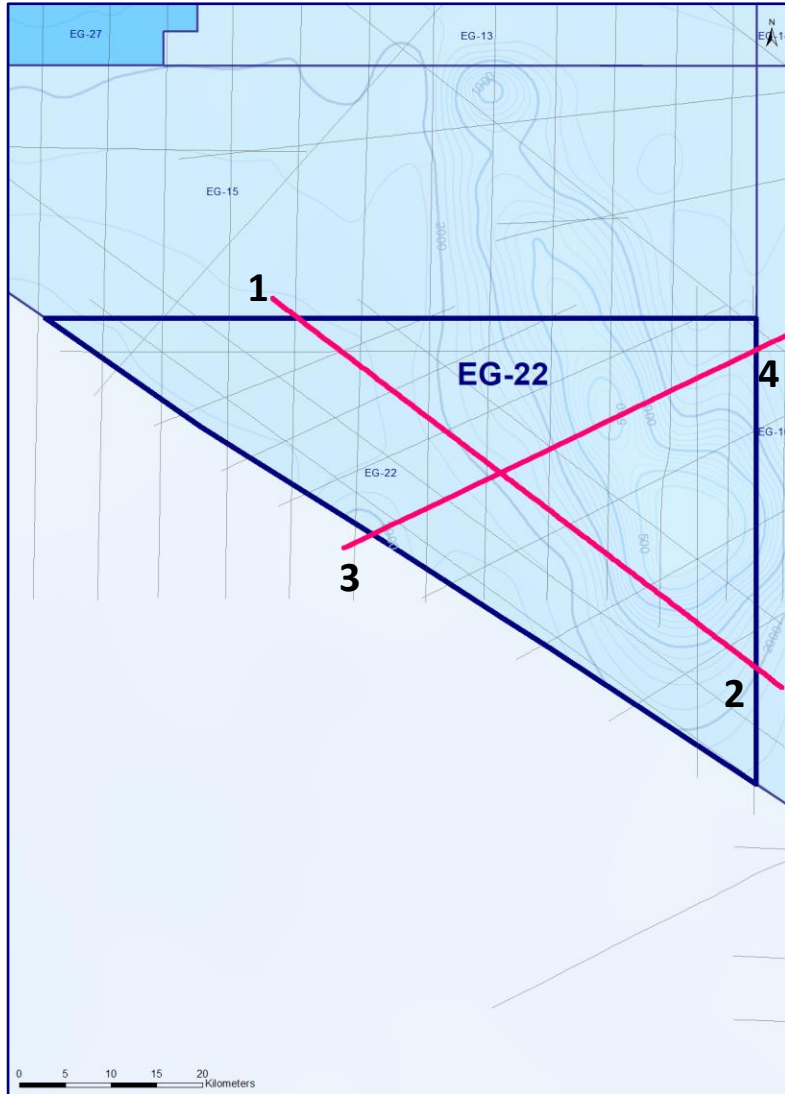


EG Ronda



EG-22

2D Seismic





EG Ronda

EG-22

3D Seismic



3D Survey Info

Survey Name: Block V

Area: 654 Km²

Operator: Glencore

Data Type: PSTM

Recorded by: BGP for Geoex

Recorded Date: 2014

Processed: DUG (Down Under Geosolutions-London)

Processed Date: 2014

Processing: Includes Angle Stacks
(nears 2-12 deg, mids 12-22 deg, fars 22-32 deg)

