

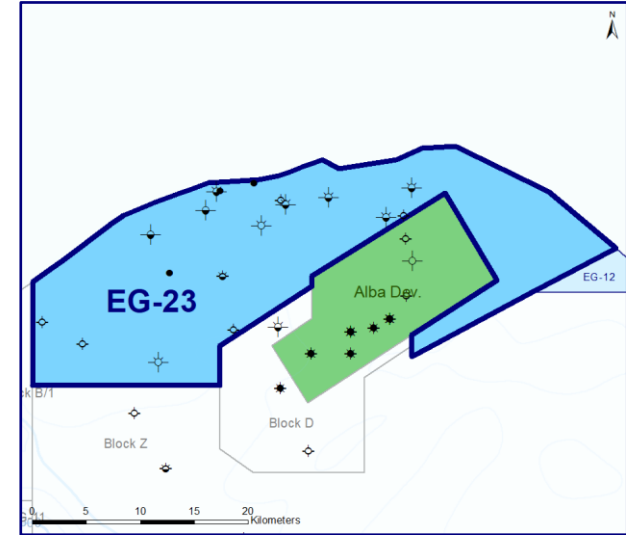
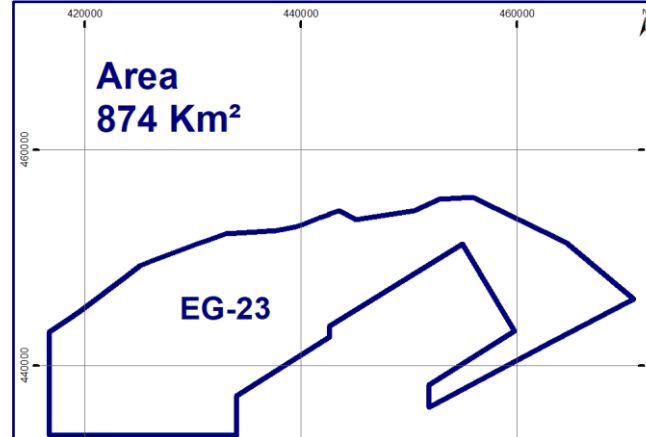
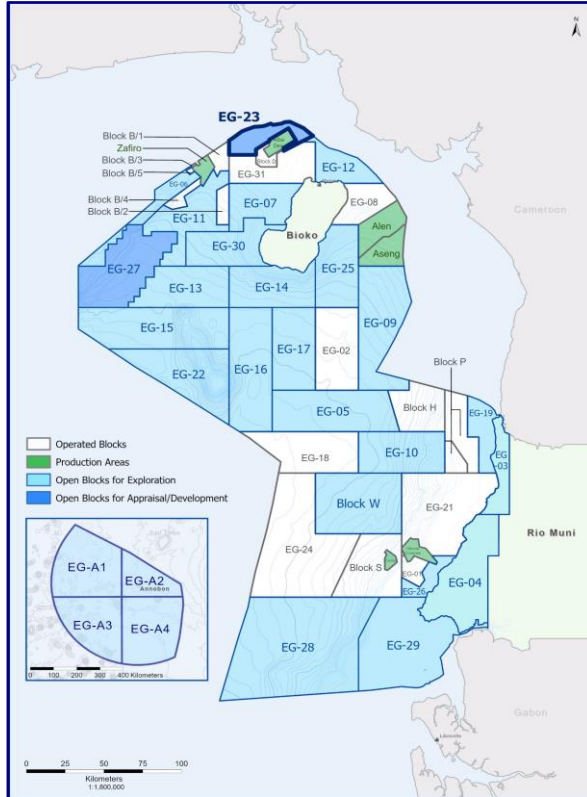


EG Ronda

EG-23



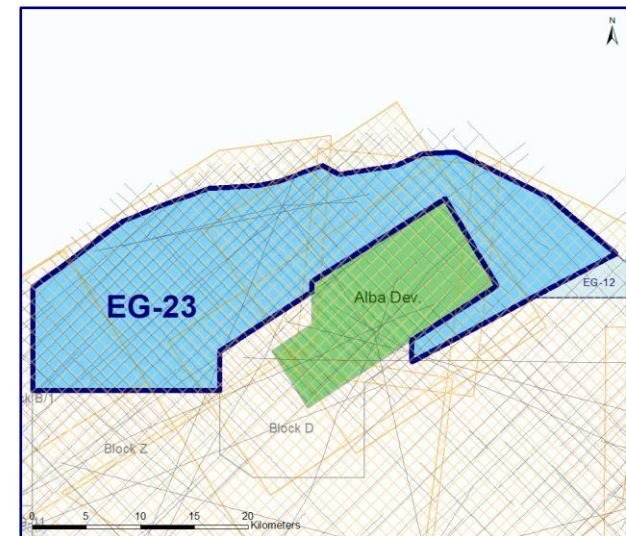
Open Block for Appraisal/Development



Wells

5 discoveries out of 19 wells:

12A-8-1X	Ibis-1	Zirconia-1
12A-9-1X	Los Loros-1	N_Alba-1
12A-9-3X	Perla-1	Estrella-1
Ambar-1	Sodalita WEST-1	Rodo-1
Bococo-1	Tsavarita-1	12A-9-2X
Riaba-1	Tsavarita-1A	
Estaurolita-1	Tsavarita-2	



3D Seismic
 4 Available Area

- 3D-1 - 225 km²
- 3D-2 - 242 km²
- 3D-3 - 411 km²
- 3D-4 - 762 km²

Total Area = 1640 Km²

2D Seismic
 49 Available Lines

Total Length = 1349 Km



EG Ronda

EG-23

Summary

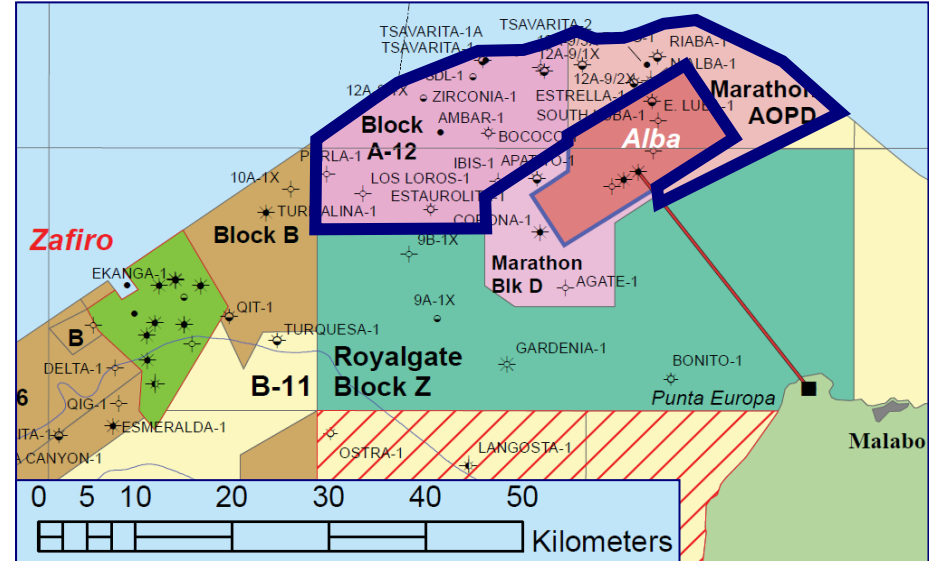


Water Depth: ~ 50 – 100 m

Plays EOD:

- Pliocene/Pleistocene plays: Localized deposition fed by up-dip sediments from the prograding Niger Delta
- Miocene plays: Incised channels to basin floor fans

Commodity type (Proven): Oil/Gas



Wells drilled: 19

Identified Prospects: 13
(9: Sub-area B, 4: old EG-23 Block)

DHIs: Yes

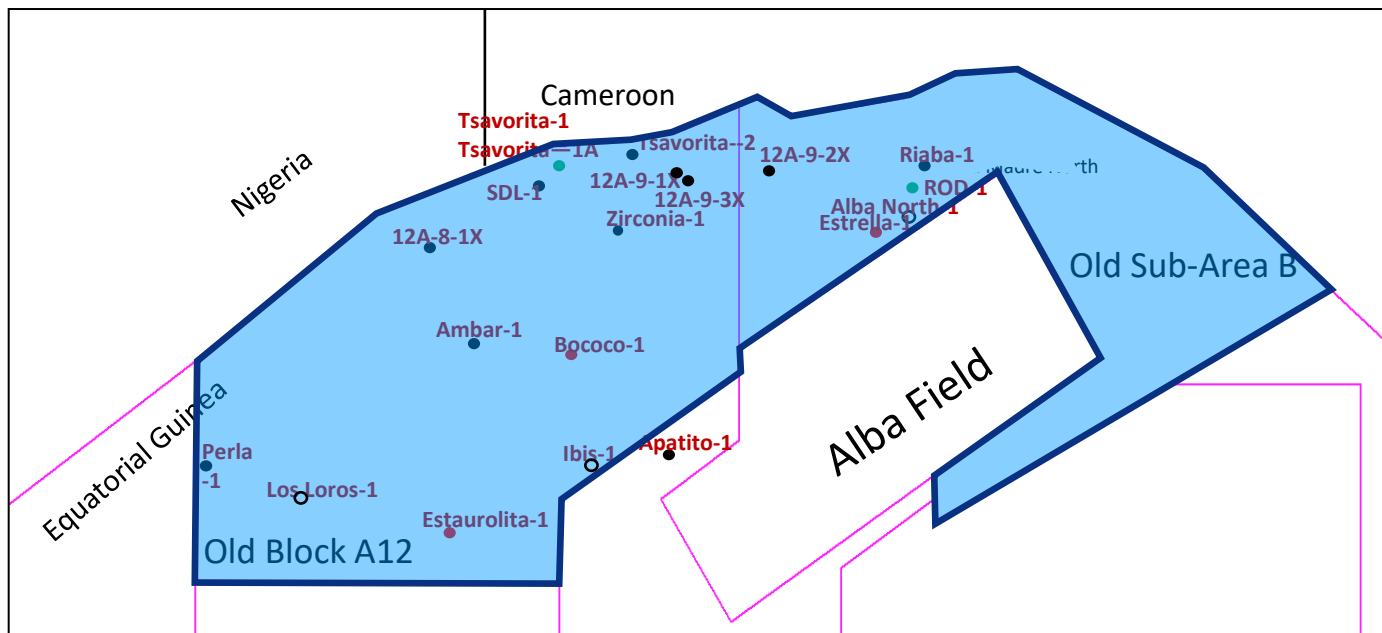
Previous Operator: Marathon



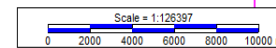
EG Ronda

EG-23

Discoveries - Volumes



Discovery	Target	Commodity	P-50
Rodo (ROD-1)	Qua Iboe	Oil	3.1 MMBOE
Bococo-1	Qua Iboe	Dry gas	22 Bcf
Estrella-1	Isongo	Gas condensate	61 Bcf
Estauroлита-1	Qua Iboe	Dry gas	77 Bcf
Tsavorita-1A	Qua Iboe	Oil with solution gas	101 MMstb (Oil) , 55 Bcf (Solution gas)





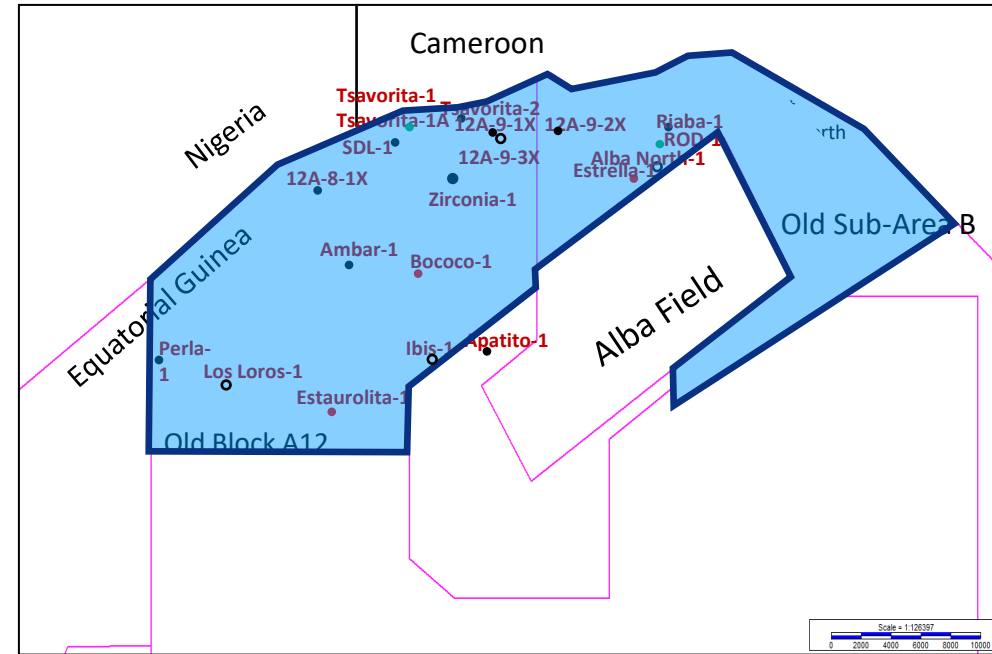
EG Ronda

EG-23

Wells Drilled - Result Summary



Well	Result	Year
ROD-1	Oil discovery	2015
SDL-1	Oil shows	2014
Bococo-1	Gas cond. discovery	2003
Ibis-1	Dry-hole	2001
Los Loros-1	Dry-hole	2001
Estrella-1	Gas cond. discovery	2000
Ambar-1	O & G shows	1998
Estaurilita-1	Gas discovery	1998
Zirconia-1	Gas show	1998
Riaba-1	Oil shows	1997
Tsavorita-2	O & G shows	1997
Tsavorita-1A	Oil discovery	1997
Tsavorita-1	Gas shows (blow-out)	1997
Perla-1	O & G shows	1996
Norte Alba-1 & ST	Dry-hole	1992
12A-8/1X	O & G shows	1982
12A-9/3X	Dry-hole	1982
12A-9/2X	O & G shows	1982
12A-9/1X	O & G shows	1982





EG Ronda

EG-23

2D Seismic & Well Log



2D Survey Info

Survey Name: 80GEP

Company: GEPSA

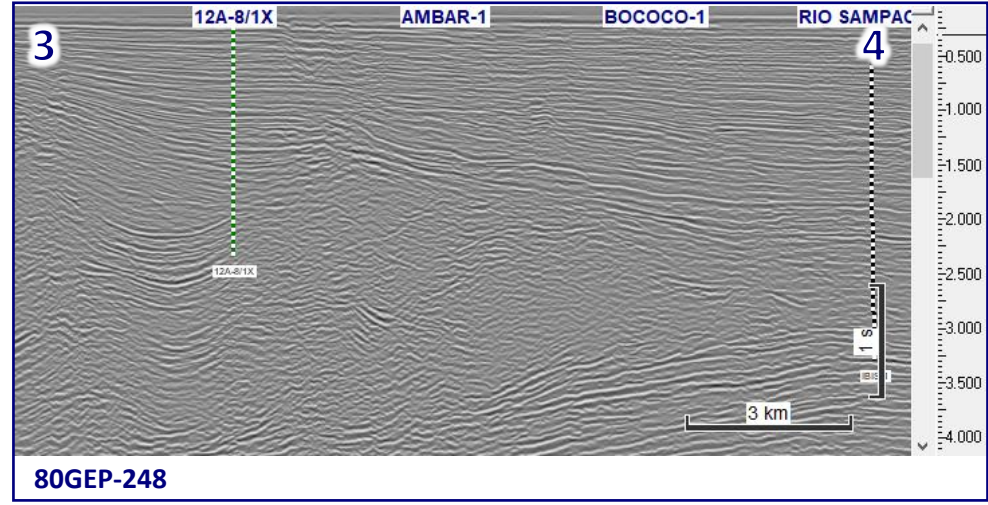
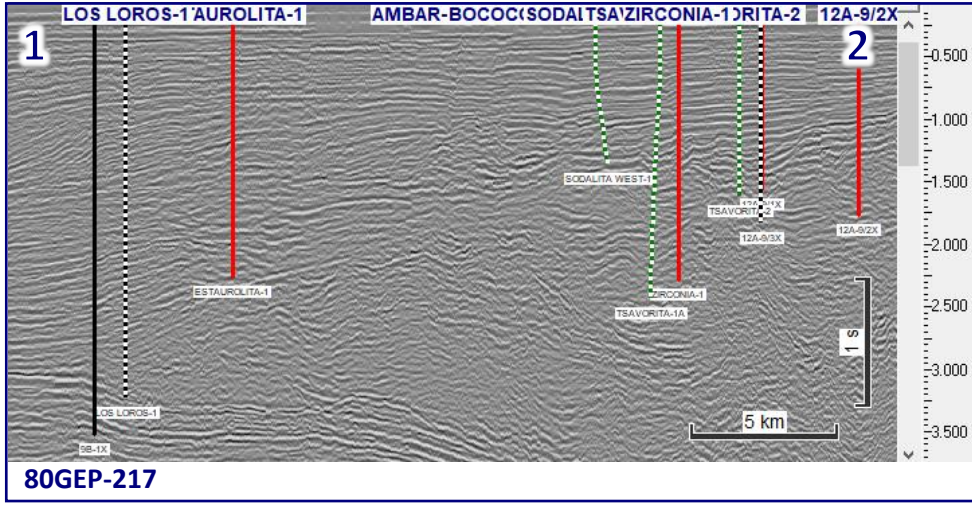
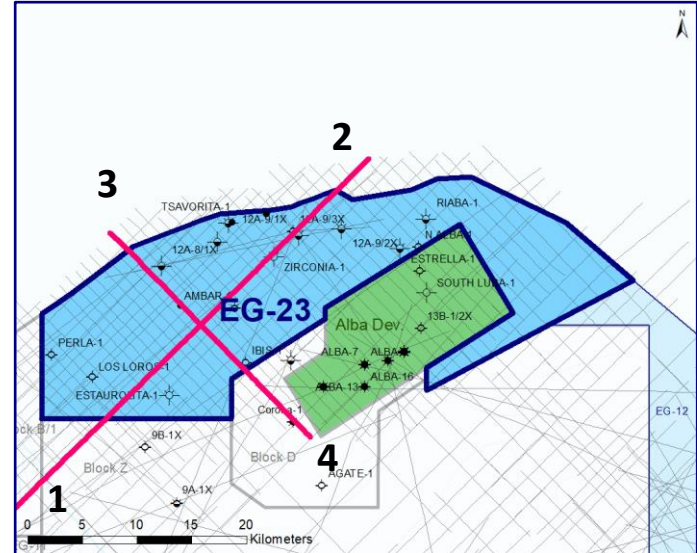
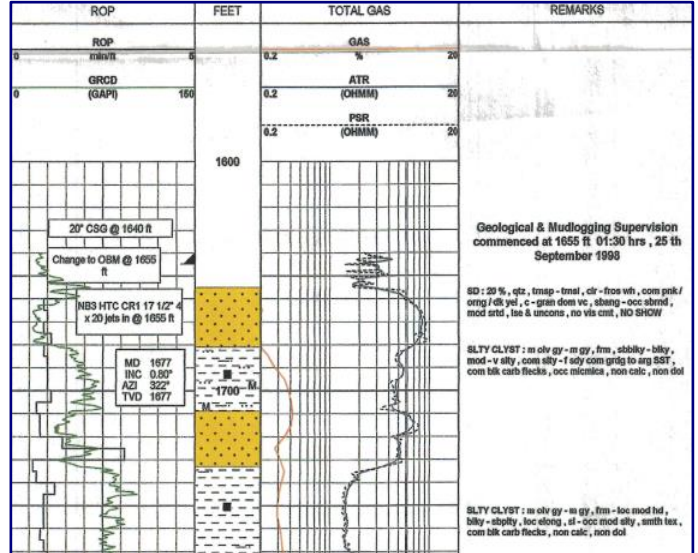
Year: 1980

Data Type: Scanned Migration

Processing By: CGG

Processing: Migration

Processing Year: 1981





EG Ronda

EG-23



3D Seismic Example

3D Survey Info

Survey Name: UMC 3D Area D 1-1996

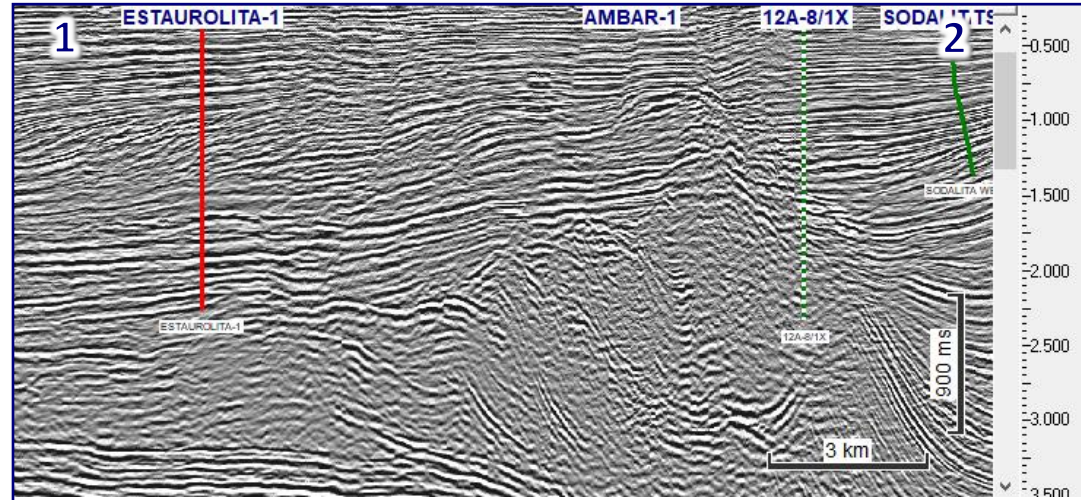
Year: 1996

Area: 652 Km²

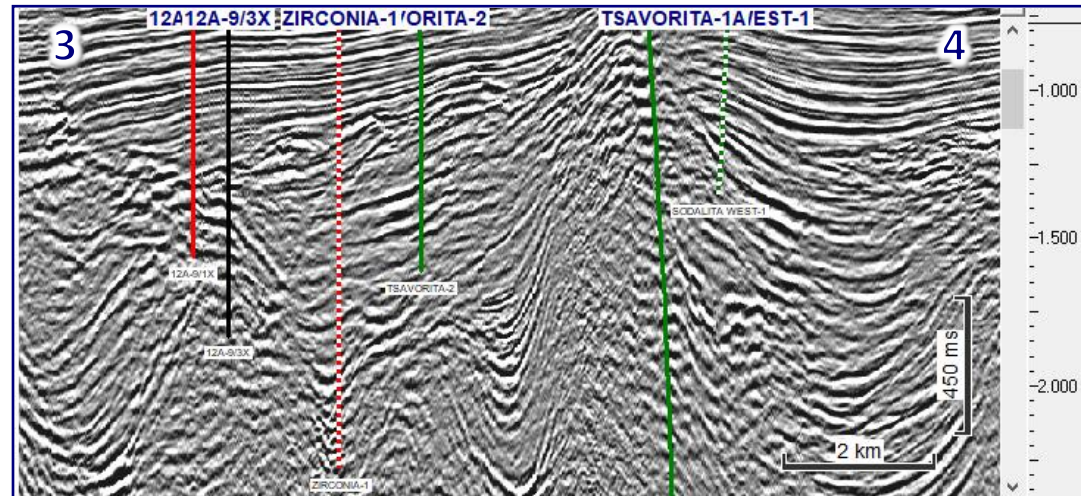
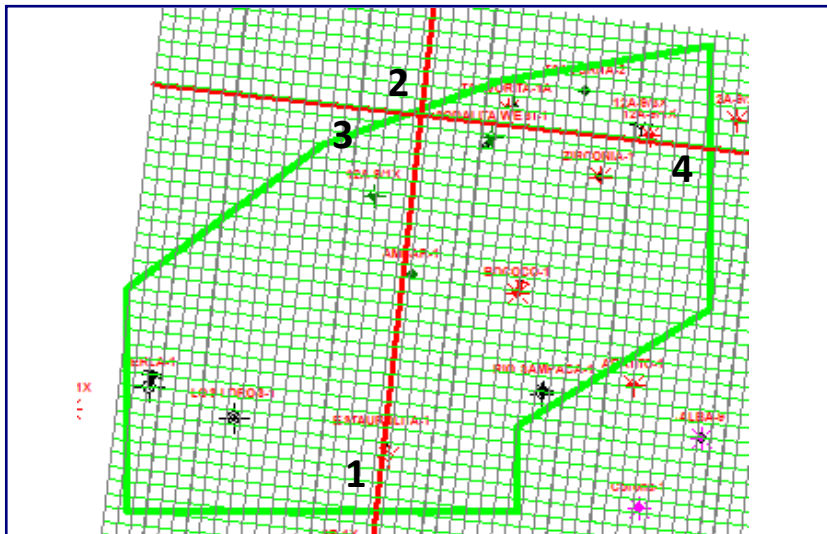
Operator: Marathon

Data Type: Full Stack Migration

Recorded Date: 1996



3D Inline



3D Crossline