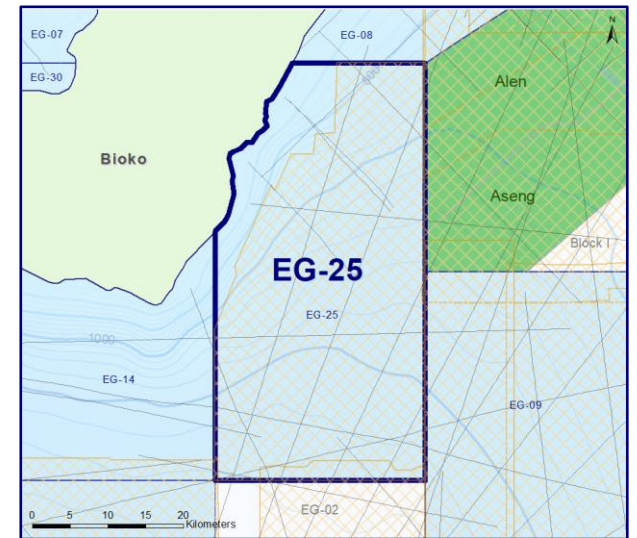
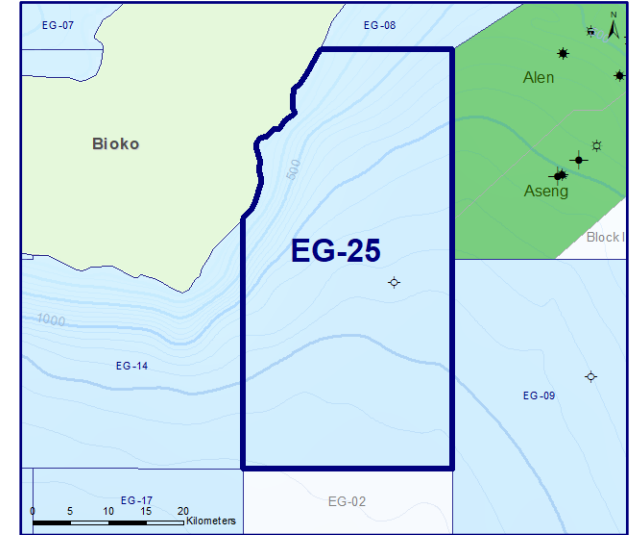
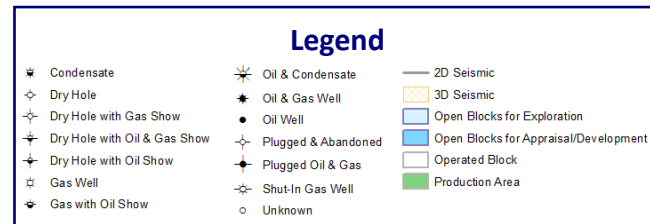
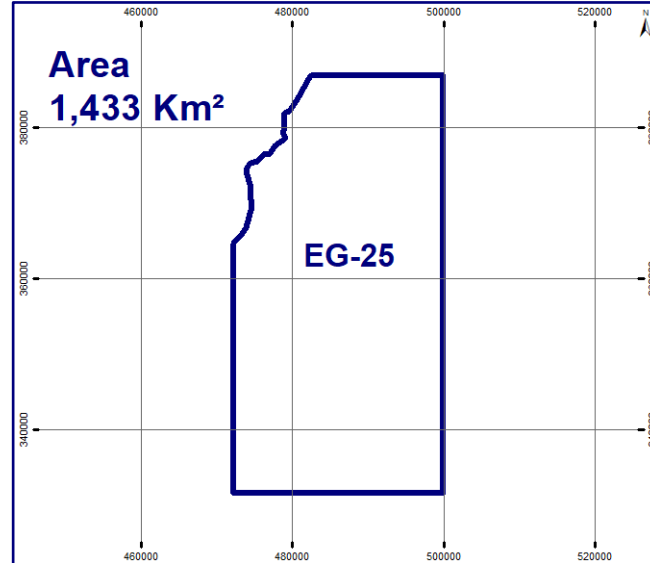
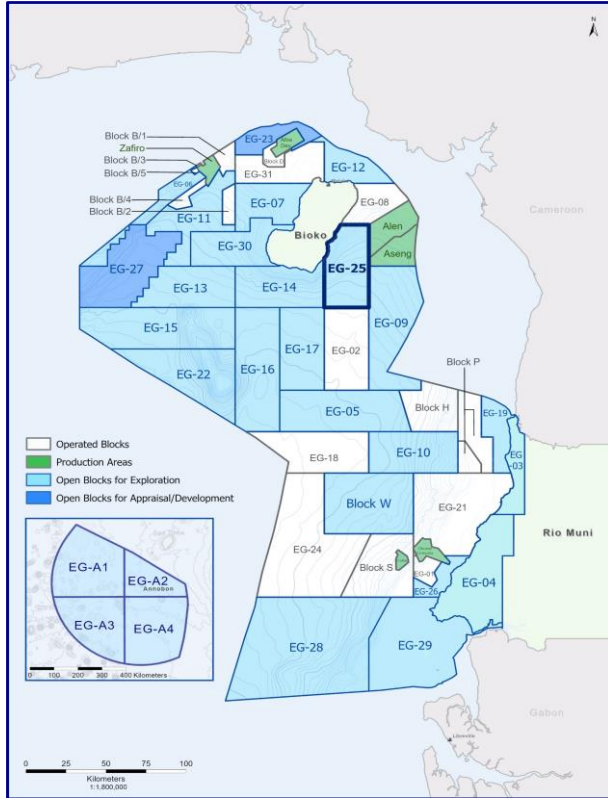




EG Ronda

EG-25

Open Block for Exploration



3D Seismic
1 Available Area

Total Area = 1,732 Km²

2D Seismic
14 Available Lines

Total Length = 417 Km

Wells
1 Wells Drilled

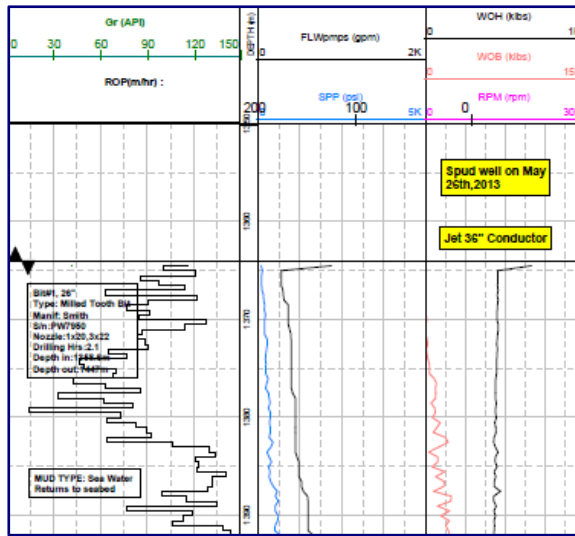
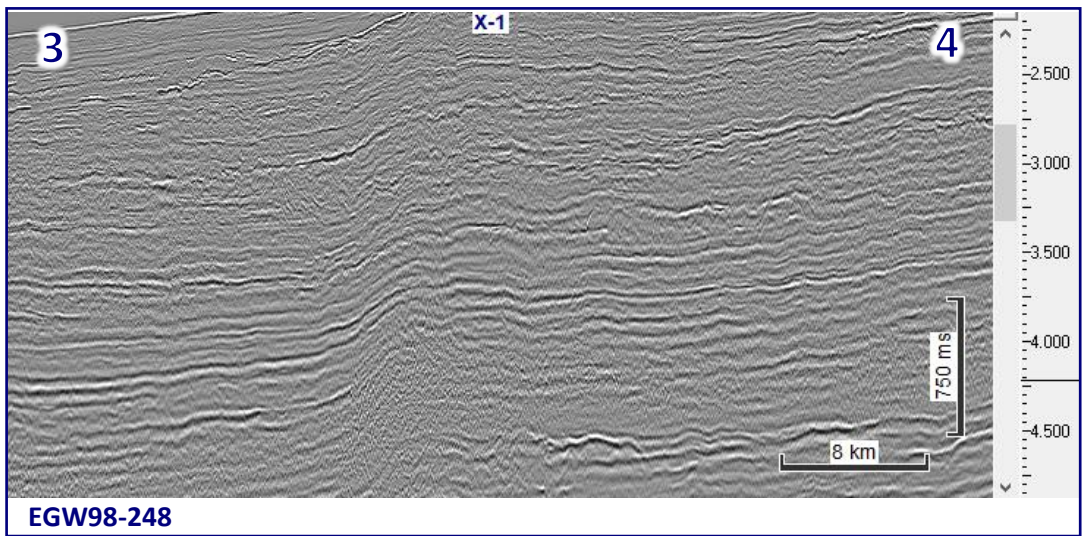
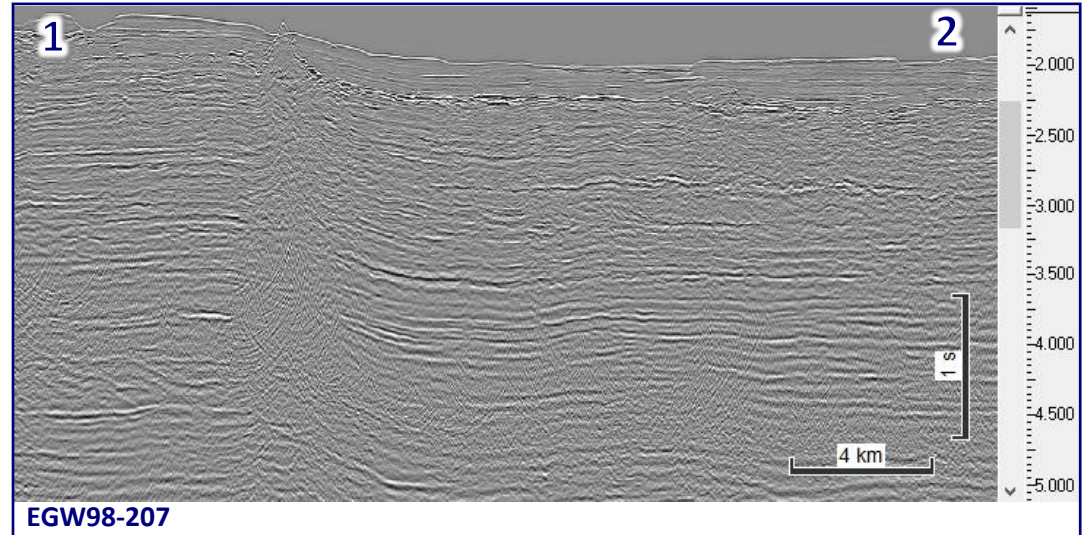
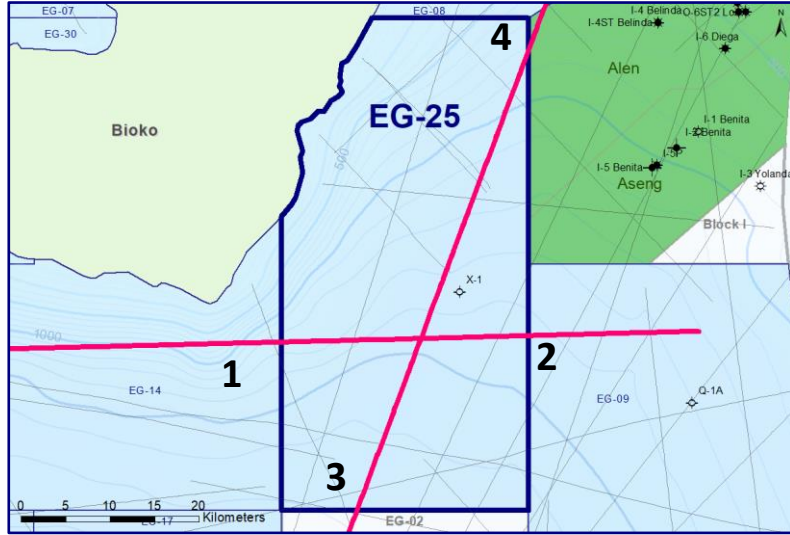
- X-1



EG Ronda

EG-25

2D Seismic & Well Log





EG Ronda

EG-25

3D Seismic



3D Survey Info

Survey Name: Block X

Year: 2011

Area: 1,732 Km²

Operator: Starc

Data Type: Full Stack Migration

Recorded by: TGS

Recorded Date: 2008

Processed: TGS-NOPEC

Processing: Migration/Angle Stacks

