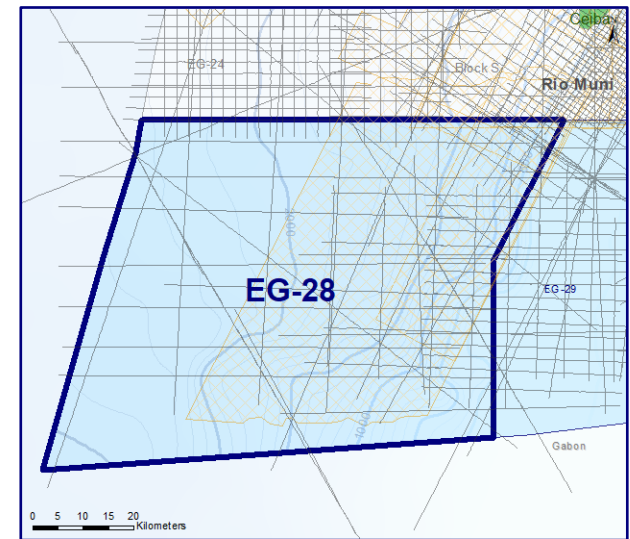
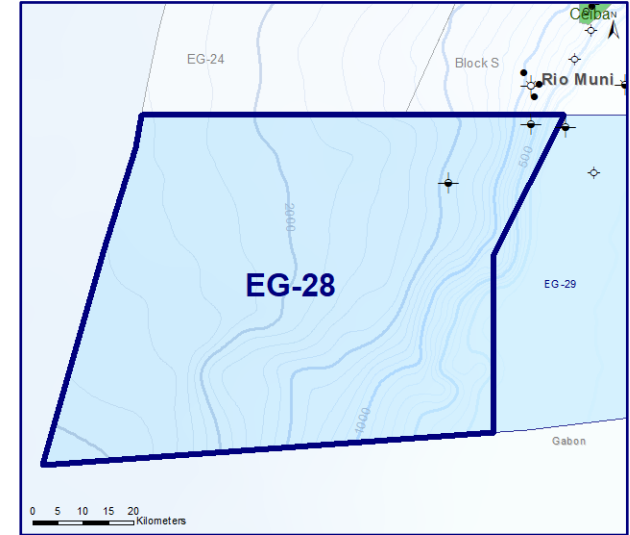
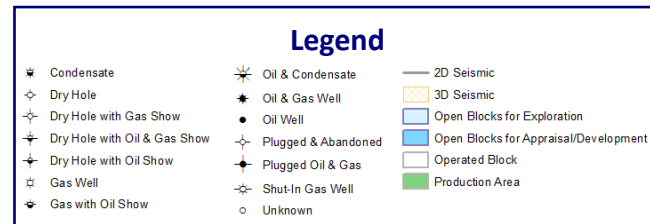
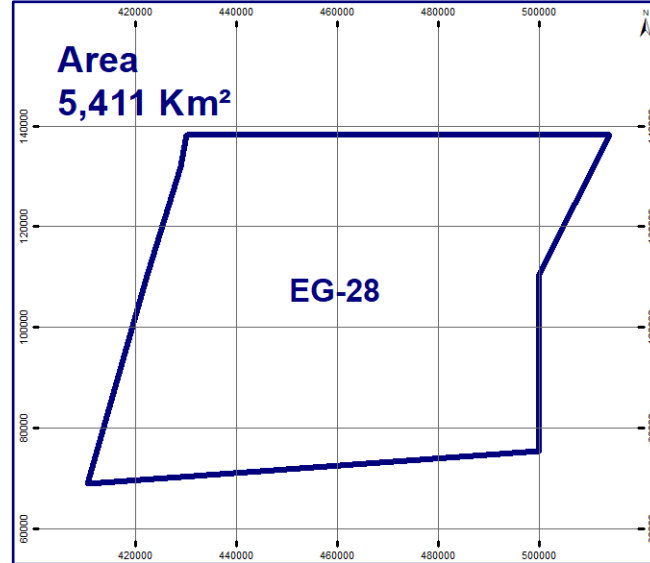
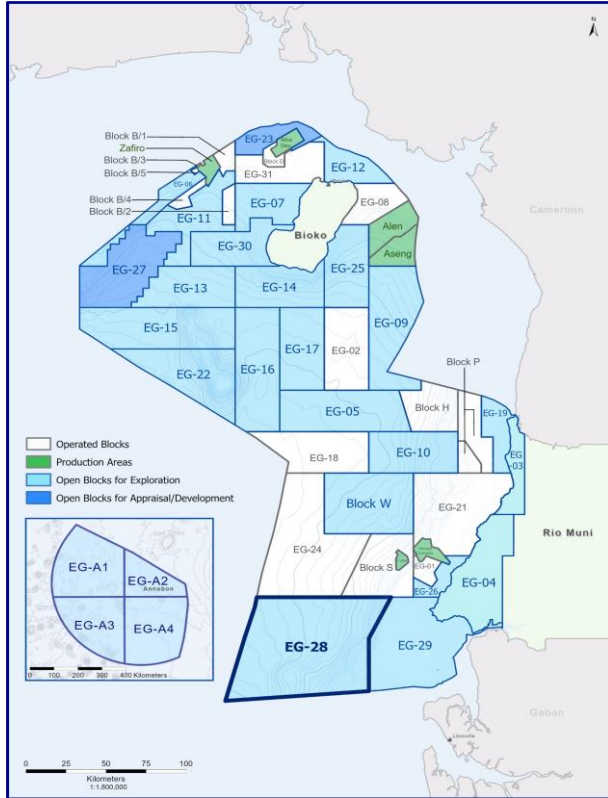




EG Ronda

EG-28

Open Block for Exploration



3D Seismic
1 Available Area
Total Area = 4,014 km²

2D Seismic
57 Available Lines
Total Length = 2,287 Km

Wells
2 Wells Drilled

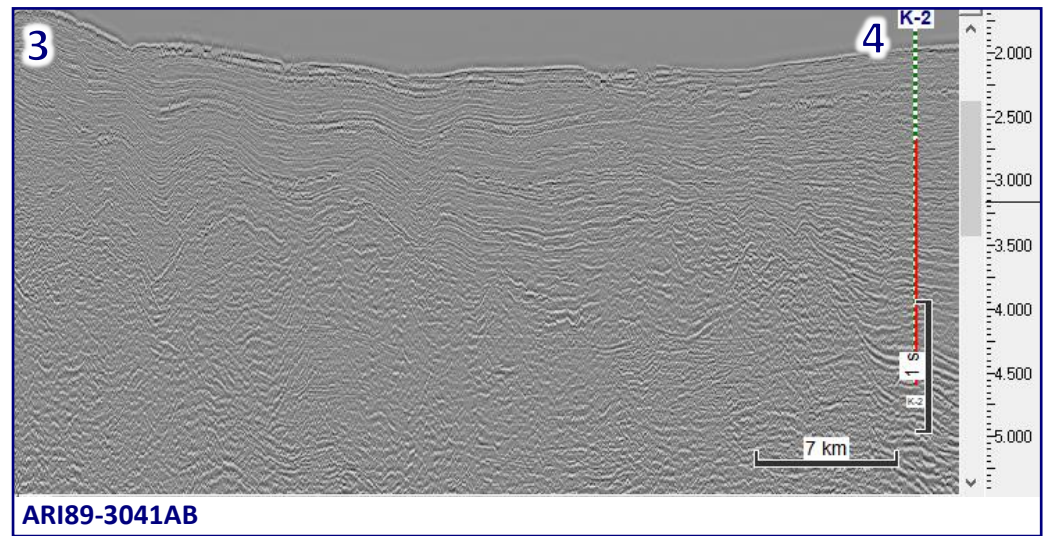
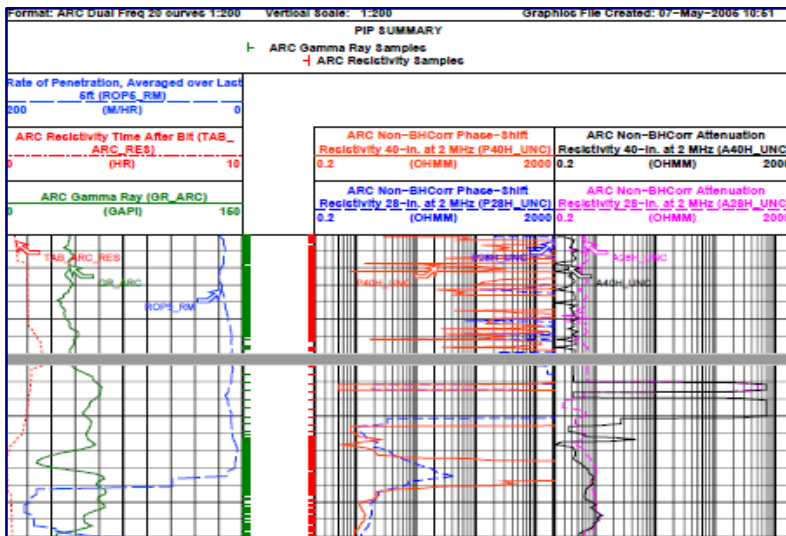
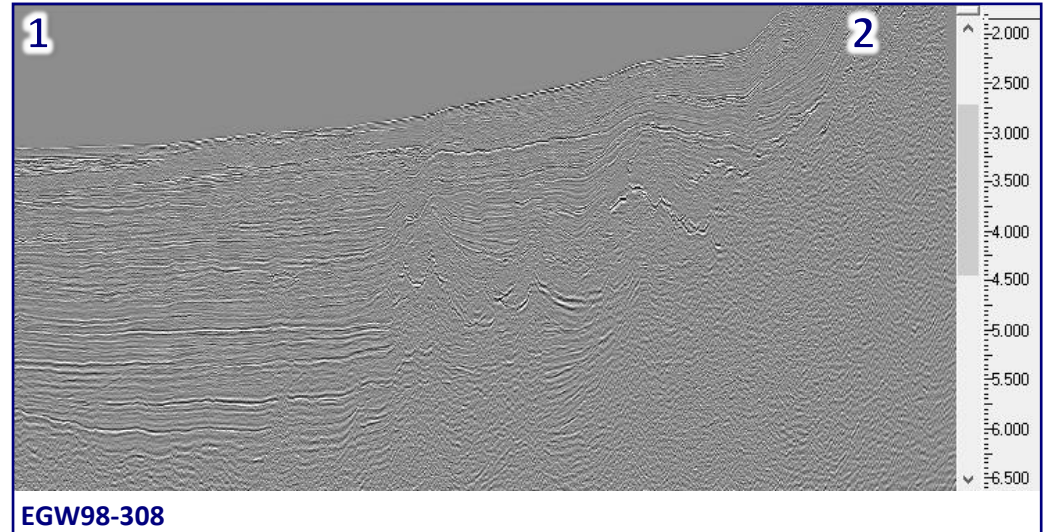
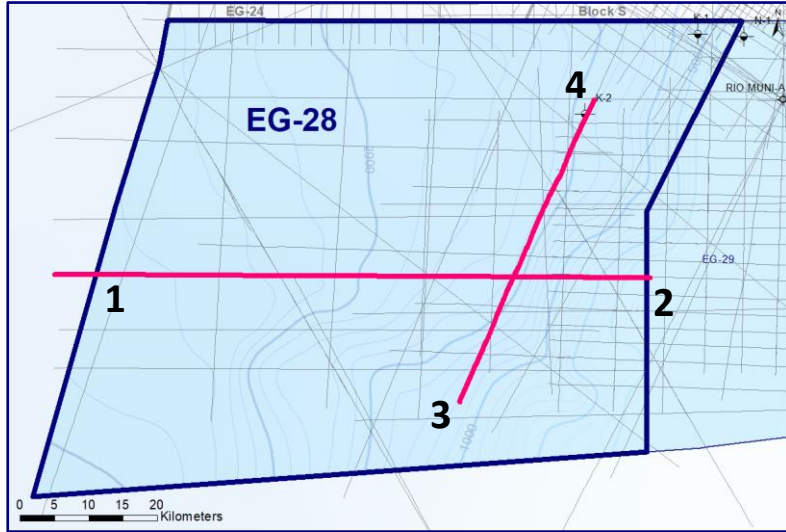
- K1
- K2



EG Ronda

EG-28

2D Seismic & Well Log





EG Ronda

EG-28

3D Seismic



3D Survey Info

Survey Name: Block K Full 3D

Area: 4,015 Km²

Data Type: Full Stack Migration

Recorded by: WESTERN-GECO

Recorded Date: 2001

Processed: GX TECHNOLOGY

Processing Date: 2001/2005

Processing: Migration/Angle Stacks

