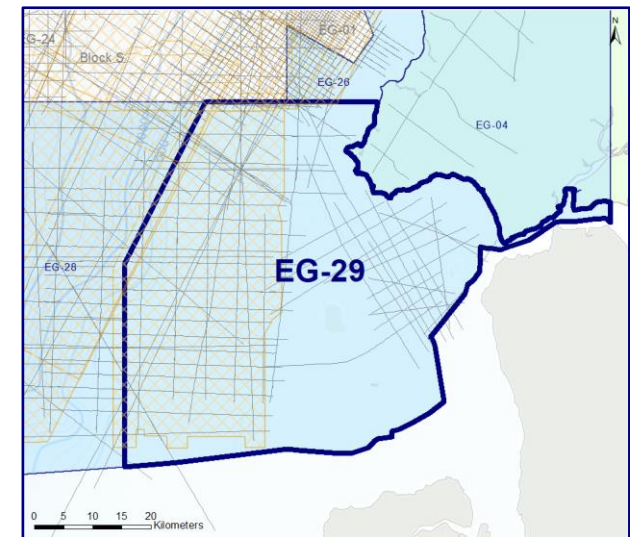
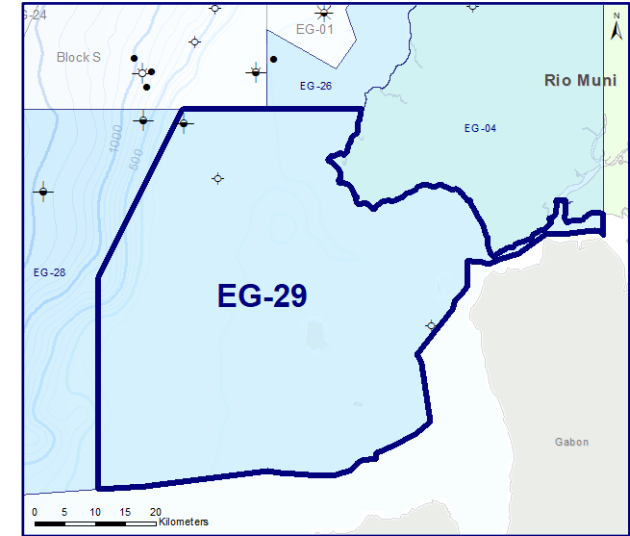
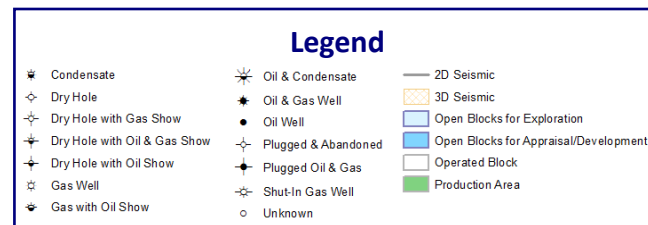
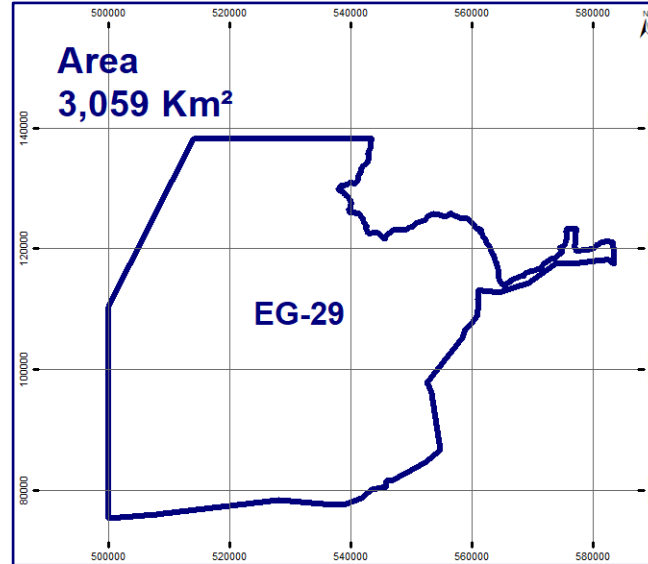
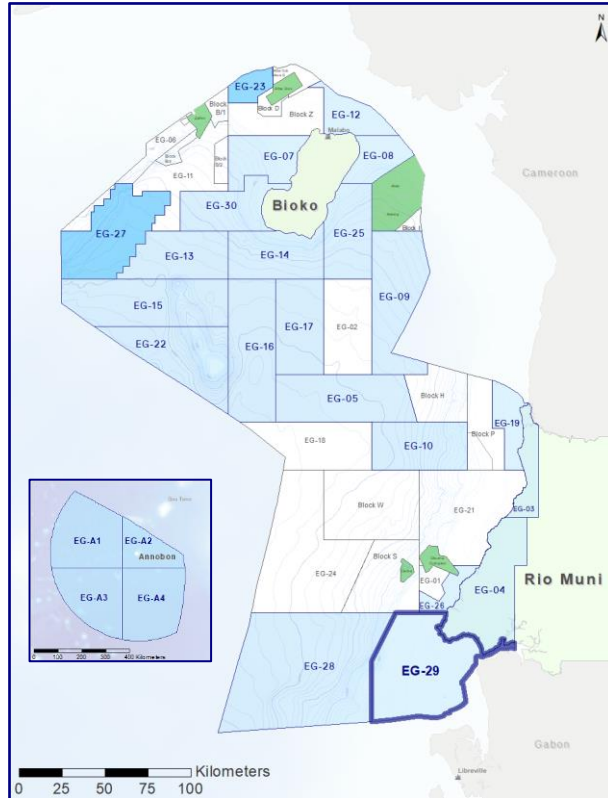




EG Ronda

# EG-29

## Open Block for Exploration



### 3D Seismic

1 Available Area

Total Area = 1,984 Km<sup>2</sup>

### 2D Seismic

55 Available Lines

Total Length = 1,474 Km

### Wells

3 Wells Drilled

- N-1
- N-2
- Rio Muni-A1

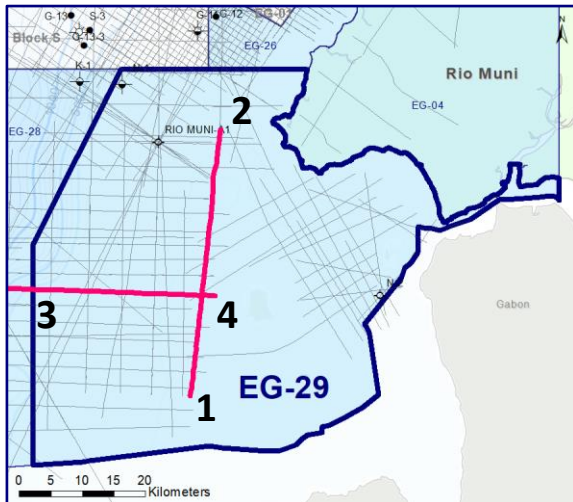
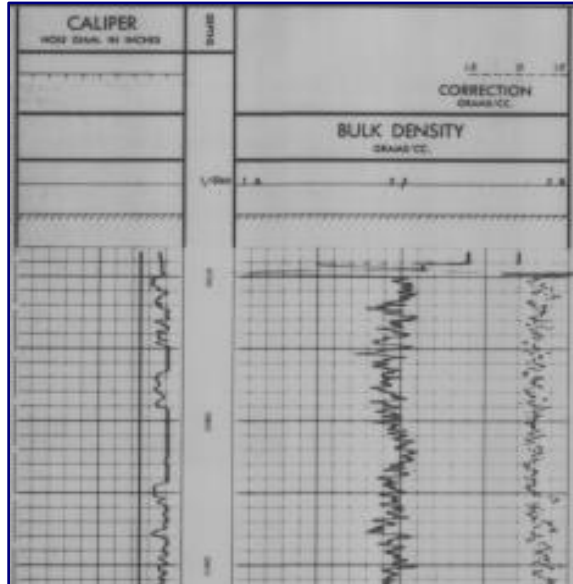


EG Ronda

# EG-29



## 2D Seismic & Well Log



### 2D Survey Info

**Survey Name:** 80GEP

**Company:** GEPSA

**Year:** 1980

**Data Type:** Scanned

Migration

**Processing by:** GSI

**Processing:** Migration

**Processing Year:** 1980

**Reprocess :** 1991

**Reprocessed by:** DIGICON

for Hamilton

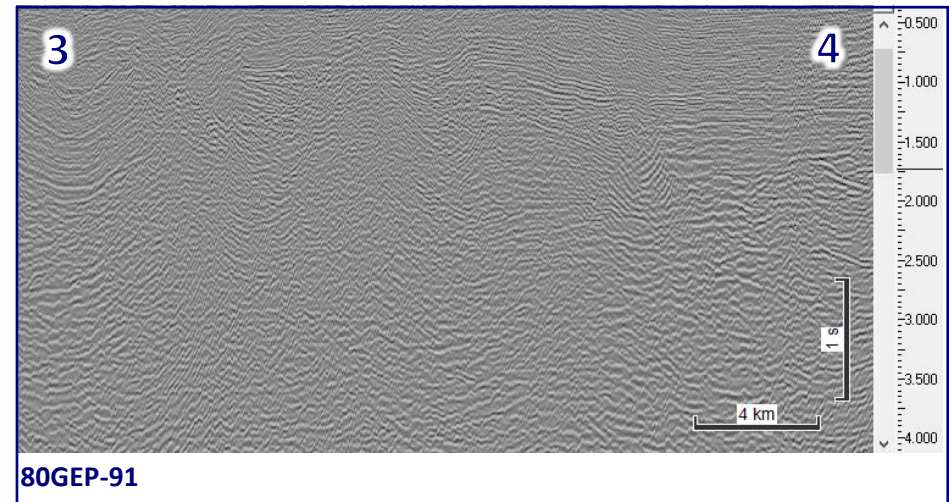
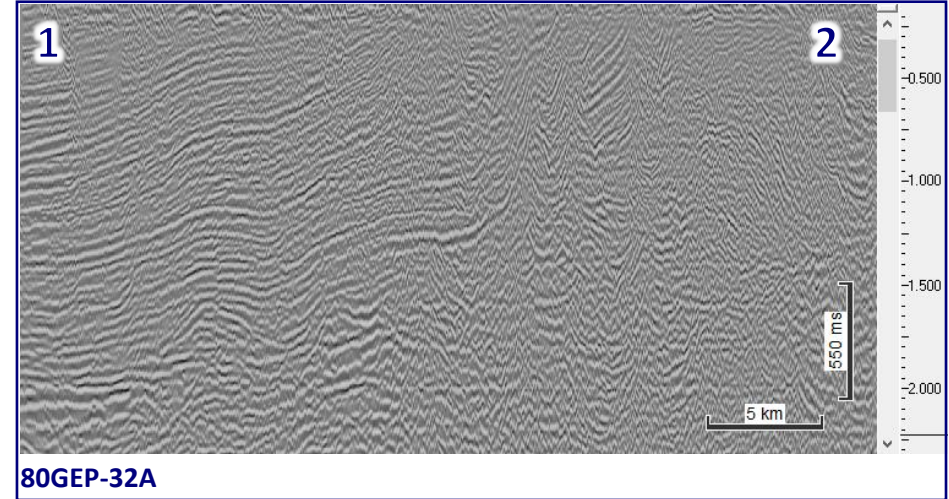
DMO/Migration

**Reprocessing by:** DIGICON

**Reprocessing Year:** 1991

**Reprocessing for:** Hamilton

DMO







EG Ronda

## EG-29

### 3D Seismic



#### 3D Survey Info

**Survey Name:** Corisco 3D Data Area

**Year:** 2002

**Area:** 1,984 Km<sup>2</sup>

**Operator:** GEPetrol

**Data Type:** Full Stack Migration

**Recorded by:** PGS Geophysical

**Recorded Date:** 2001

**Processed:** PGS Geophysical

**Processing Date:** 2002

**Processing:** Migration

