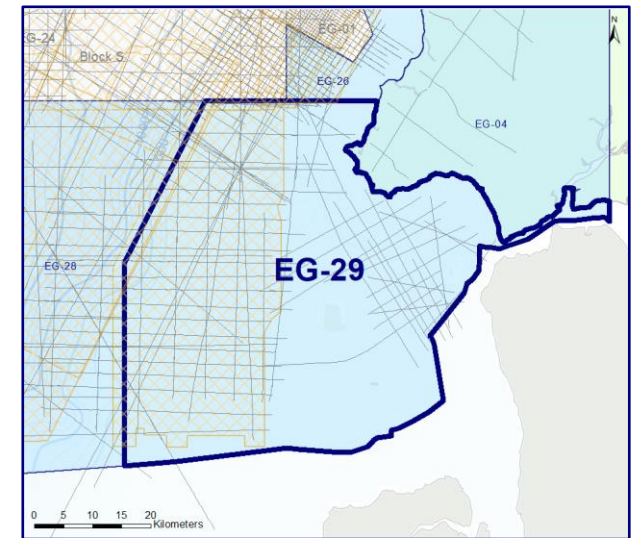
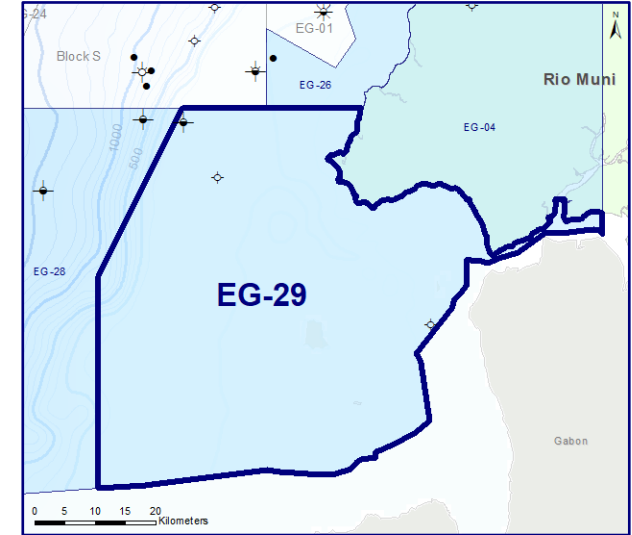
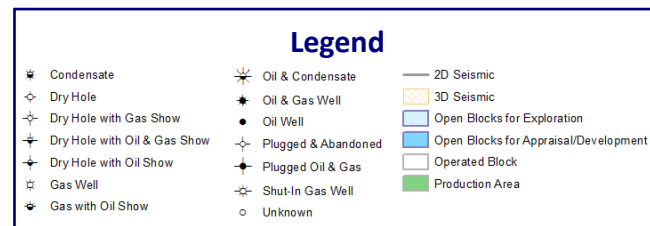
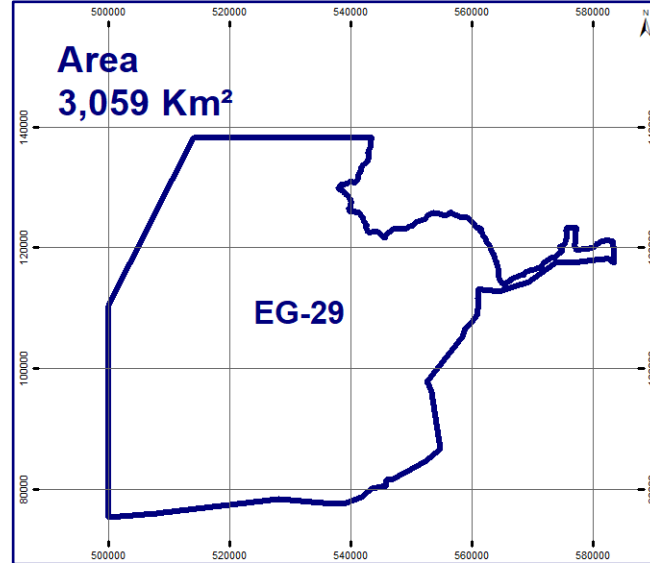
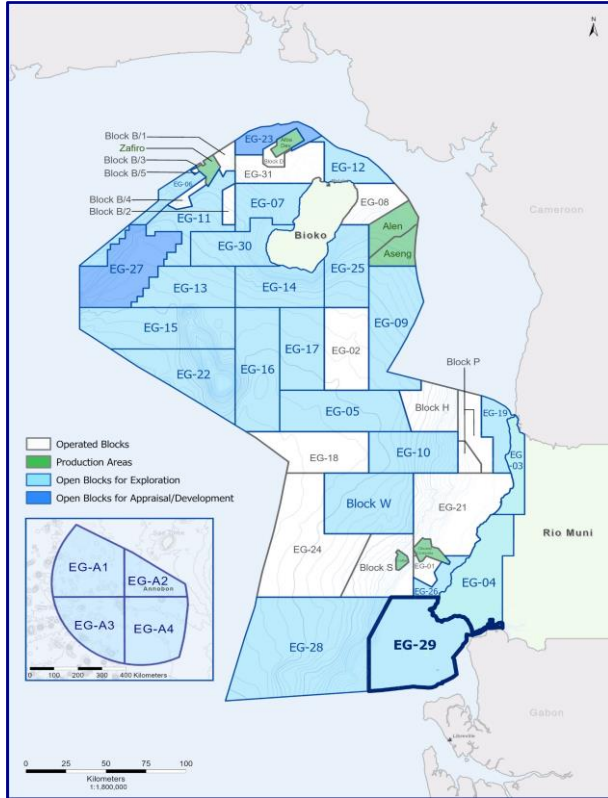




EG Ronda

EG-29

Open Block for Exploration



3D Seismic
1 Available Area

Total Area = 1,984 Km²

2D Seismic
55 Available Lines

Total Length = 1,474 Km

Wells
3 Wells Drilled

- N-1
- N-2
- Rio Muni-A1

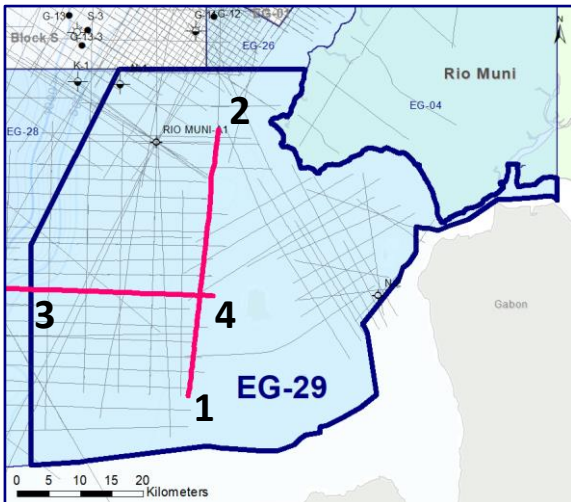
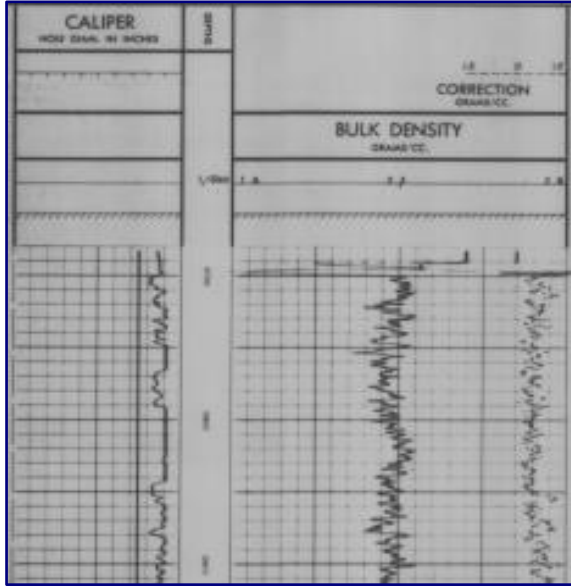


EG Ronda

EG-29



2D Seismic & Well Log



2D Survey Info

Survey Name: 80GEP

Company: GEPSA

Year: 1980

Data Type: Scanned

Migration

Processing by: GSI

Processing: Migration

Processing Year: 1980

Reprocess : 1991

Reprocessed by: DIGICON

for Hamilton

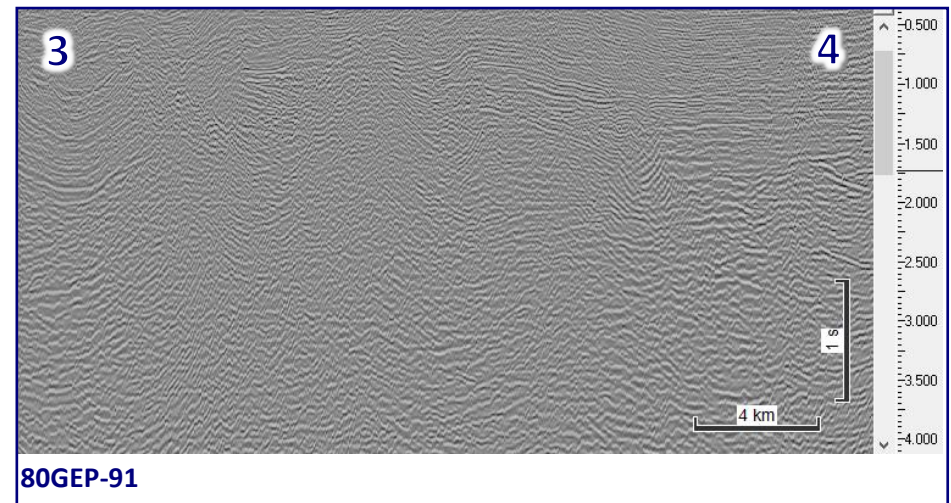
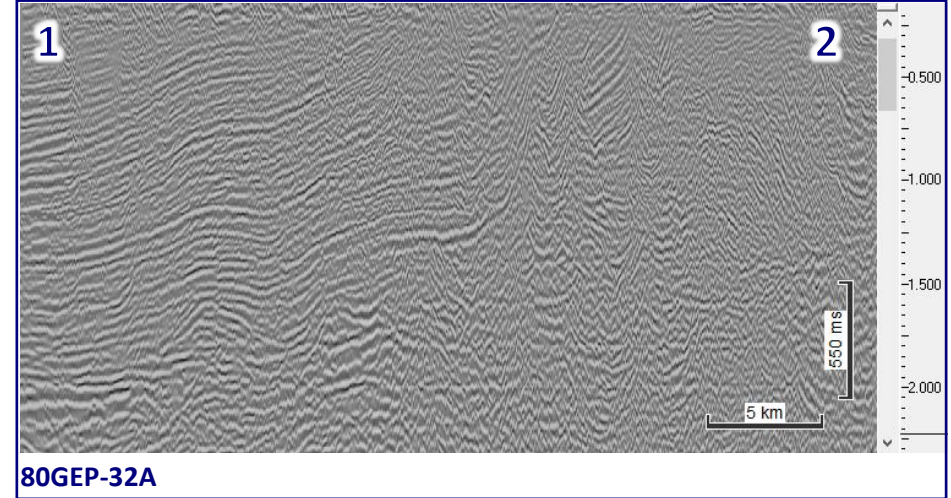
DMO/Migration

Reprocessing by: DIGICON

Reprocessing Year: 1991

Reprocessing for: Hamilton

DMO





EG Ronda

EG-29



3D Seismic

3D Survey Info

Survey Name: Corisco 3D Data Area

Year: 2002

Area: 1,984 Km²

Operator: GEPetrol

Data Type: Full Stack Migration

Recorded by: PGS Geophysical

Recorded Date: 2001

Processed: PGS Geophysical

Processing Date: 2002

Processing: Migration

