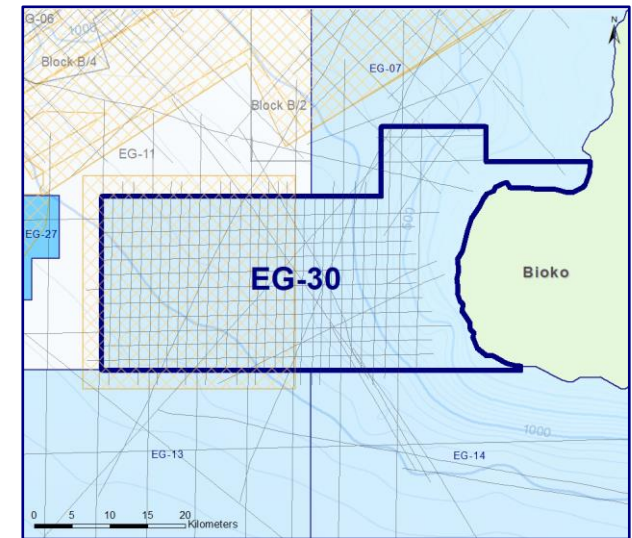
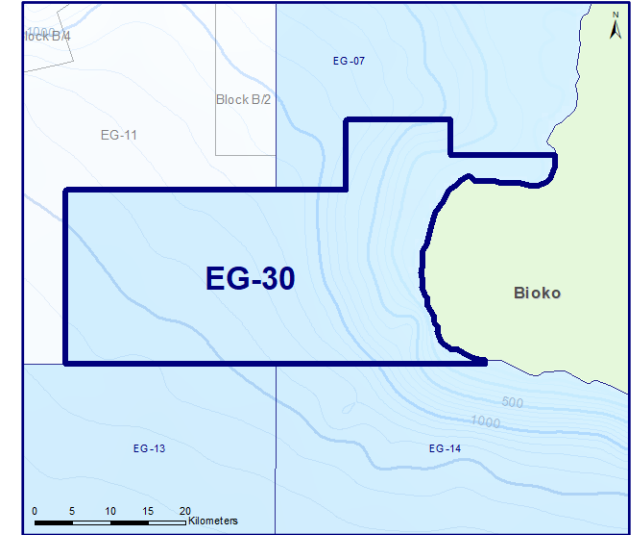
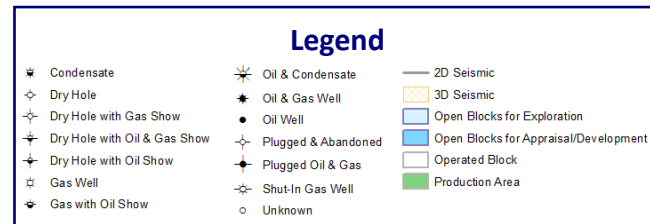
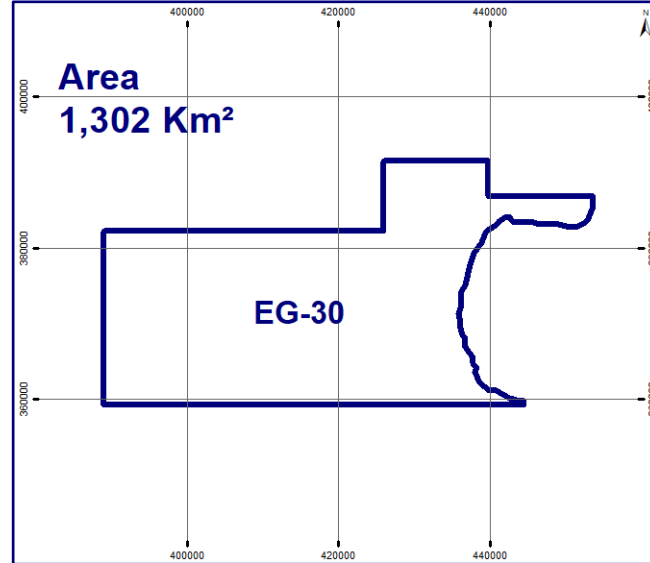
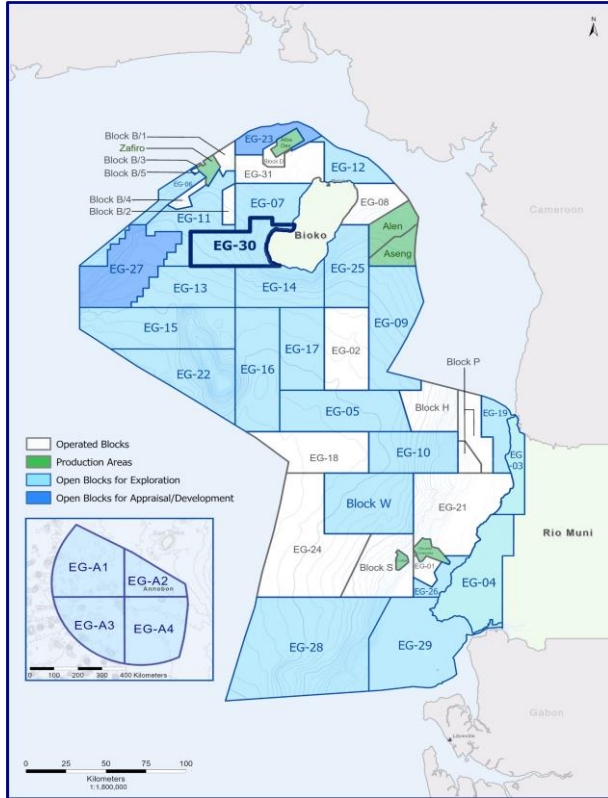




EG Ronda

EG-30

Open Block for Exploration



3D Seismic
1 Available Area

Total Area = 793 Km²

2D Seismic
54 Available Lines

Total Length = 1,716 Km

Wells
None Available

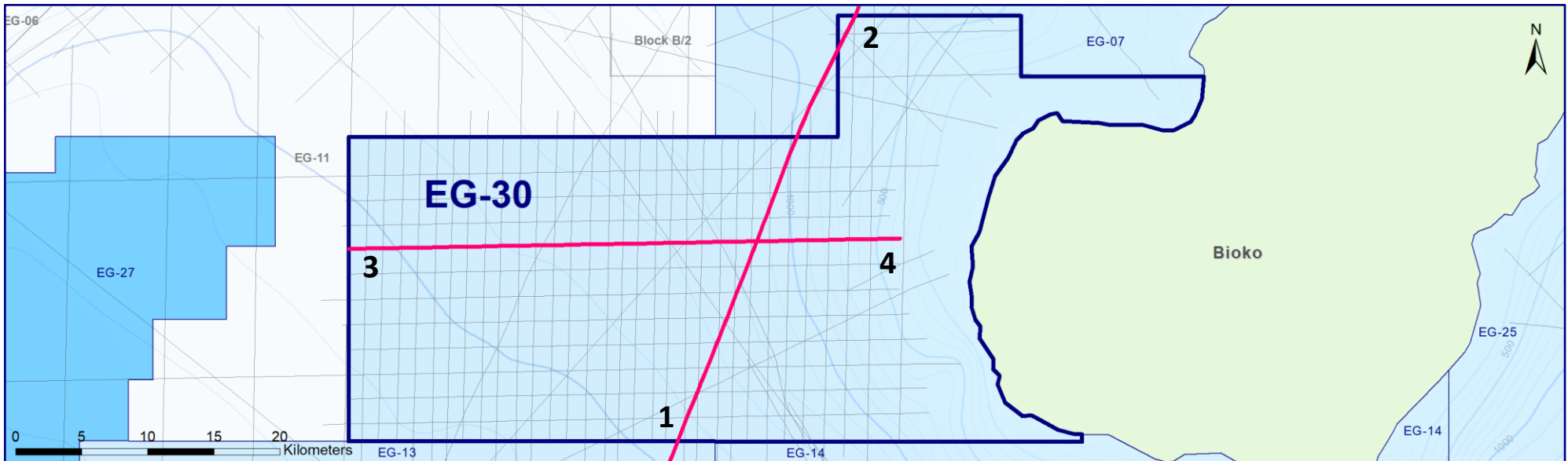
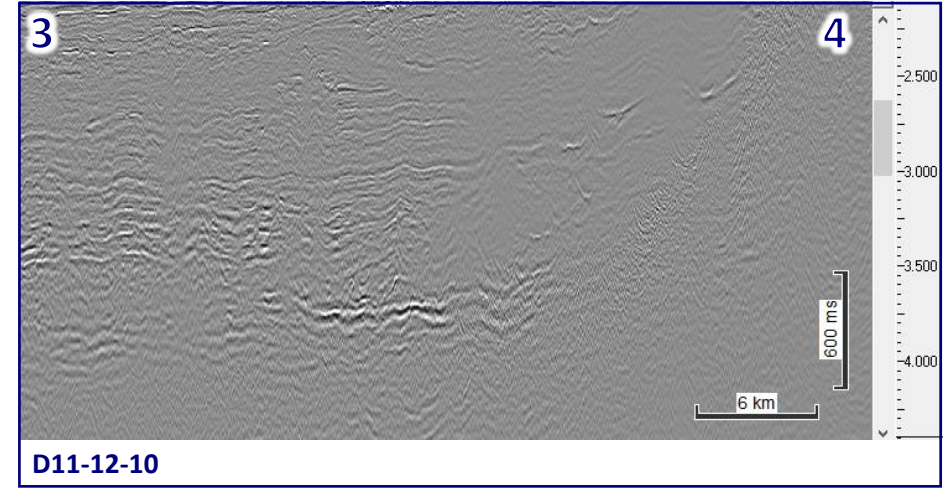
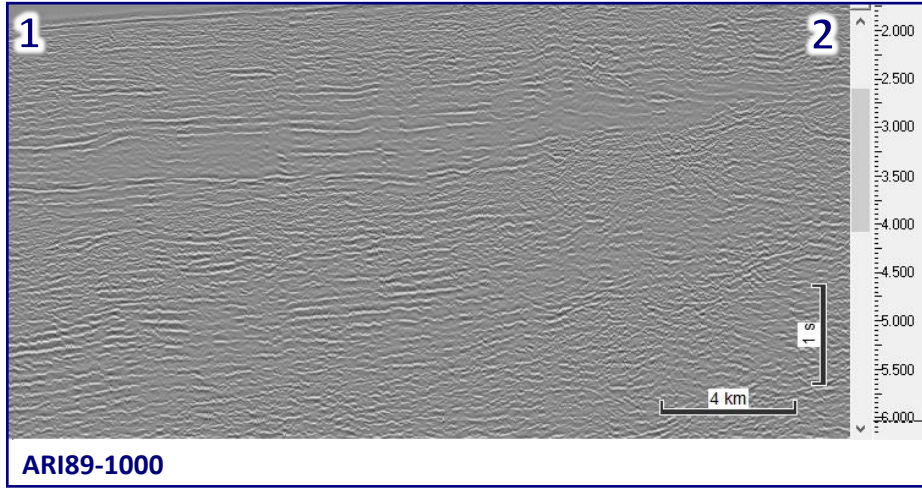


EG Ronda

EG-30



2D Seismic





EG Ronda

EG-30



3D Seismic

3D Survey Info

Survey Name: Block J

Year: 2008

Area: 793 Km²

Operator: Oranto

Data Type: Full Stack Migration

Recorded by: TGS

Recorded Date: 2008

Processed: GEOTRACE

Processing Date: 2008

Processing: Migration/Angle Stacks

